

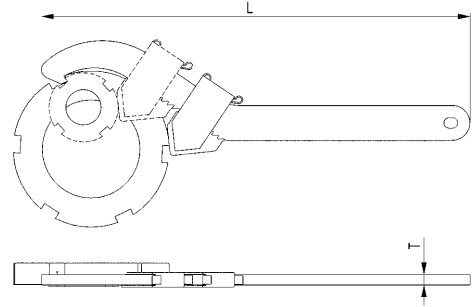
## No. 771

### Adjustable hook wrench with nose

for grooved nuts to DIN 1804 and bearing nuts to DIN 981.  
Special steel, hardened and blued.  
Rounded edges for better handling.



Order no.	Size	L	T	Weight [g]
51201	20- 42	180	4	100
51219	45- 90	250	6	250
51227	95-165	335	10	710



## No. 771Md

### Adjustable hook wrench with nose and torque wrench socket

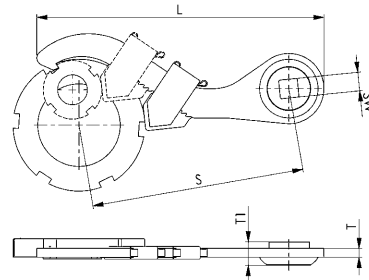
for grooved nuts to DIN 1804 and bearing nuts to DIN 981.  
Special steel, hardened and blued.  
Drive: square socket



Order no.	Size	Drive SW [inch]	L	S	T	T1	Weight [g]
51516	20 - 42	1/2	135	100	4	16,0	165
51532	45 - 90	1/2	192	150	6	16,0	310
557065	95 - 165	1/2	272	200	10	16,0	680
51557	95 - 165	3/4	298	220	10	20,5	910

#### Note:

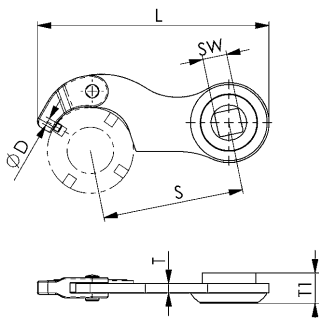
The set value for the torque wrench is dependant on insertion dimension „S“.  
The operating manual provided with your torque wrench contains the requisite information and calculation formulae.



## No. 776Md

### Hinged hook wrench with pin and torque wrench socket

For nuts with radial holes to DIN 1816.  
Special steel, hardened and blued.  
Drive: square socket



Order no.	Size	Drive SW [inch]	dia. D	L	S	T	T1	Weight [g]
52753	35-60	1/2	4	120	75	5	16,0	185
52761	60-90	1/2	6	168	100	6	16,0	320
565653	95-165	3/4	6	205	125	7	20,4	605

#### Note:

The set value for the torque wrench is dependant on insertion dimension „S“.  
The operating manual provided with your torque wrench contains the requisite information and calculation formulae.

#### Recommendations



No. 771Md,  
page 50



No. 250Md,  
page 58



Subject to technical alterations.