

Workplace Solutions

Easy and reliable assembly

Klippon® Automated RailAssembler

WORKPLACE
SOLUTIONS



Weidmüller 

Efficient assembly of terminal blocks

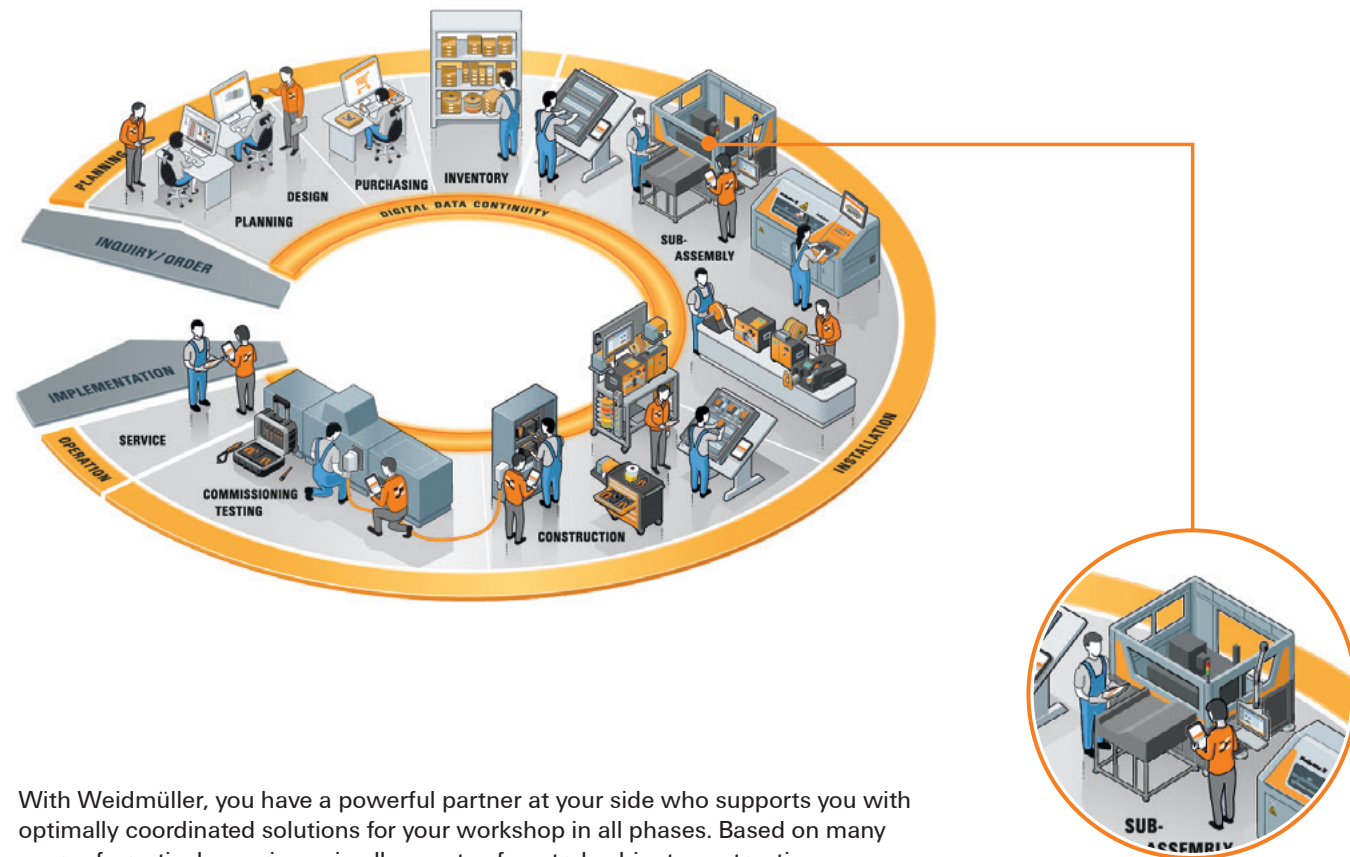
Klippon® Automated RailAssembler – effective time saving in control cabinet building

Value-added processes must be faster, more precise and more economical, especially in times of full order books and a growing lack of specialists. This particular applies to control cabinet construction. Digitalisation and automation are important factors for increasing efficiency.

The Klippon® Automated RailAssembler, in combination with the Weidmüller Configurator (WMC) software, enables the fully automatic assembly of terminal blocks. By using the automated system the commissioning, allocation and positioning of individual terminals is no longer necessary. Time savings of up to 60% can be achieved during the assembly process - and even more when considering the unmanned operation of up to 7 hours.

Special features:

- Up to 60 % time saving in terminal block assembly (or significantly more considering the unmanned operation of up to 7 hours)
- Avoidance of incorrect assembly thanks to data consistency between eCAD programs and Weidmüller Configurator (WMC)
- Easy handling due to universal magazines



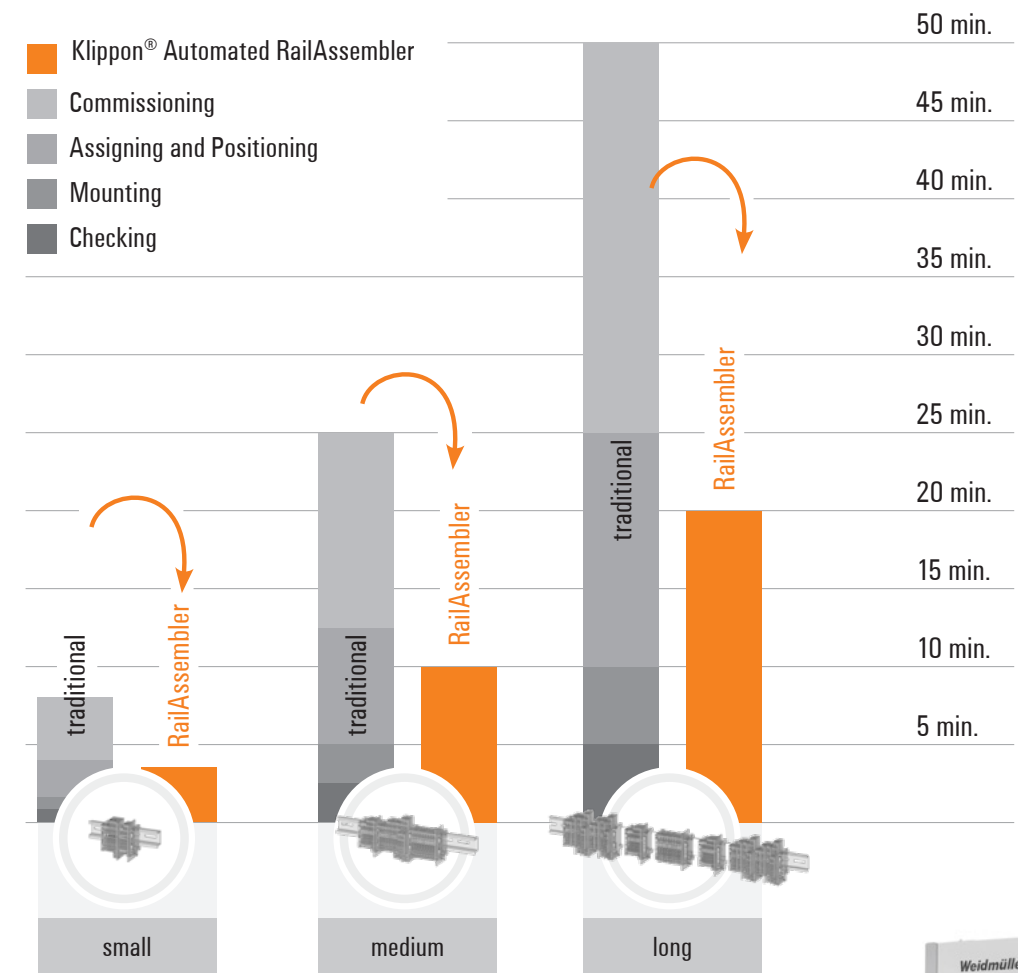
With Weidmüller, you have a powerful partner at your side who supports you with optimally coordinated solutions for your workshop in all phases. Based on many years of practical experience in all aspects of control cabinet construction, we offer you a comprehensive portfolio with which you can effectively accelerate your processes and increase your quality.

Discover your optimisation potential now:
www.weidmueller.com/workplace

Time savings up to
60%*

* or significantly more considering the unmanned operation

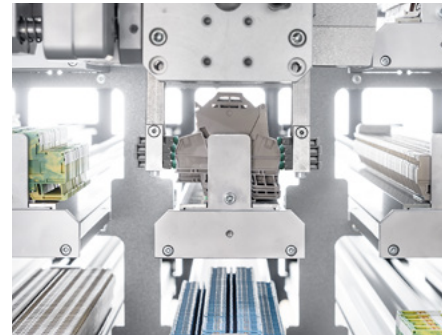
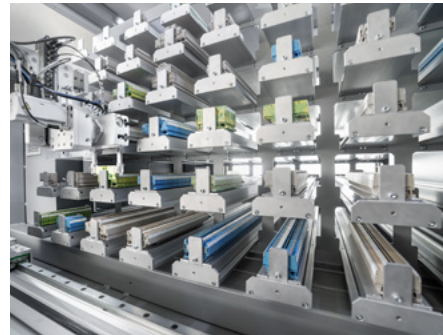
With the Klippon® Automated RailAssembler the commissioning, assigning and positioning, snapping on and inspecting the individual terminal blocks are obsolete.



Your advantage through innovative technologies

The cost-effective system for fully automated terminal block assembly

Perfect for
200.000
terminal blocks
per year



Maximum flexibility

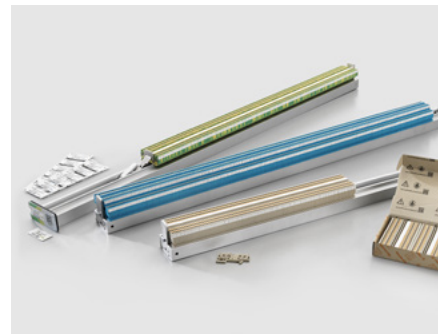
The universal magazines can be loaded with various components due to its universal design. Hereby maximum flexibility in operation is guaranteed. The machine has a total of 48 magazine positions for components as well as 20 positions for pre cut mounting rails.

Reliable quality

A continuous use of planning data from eCAD programs is possible through the Weidmüller Configurator (WMC). Due to the omission of the manual production steps, error potentials are minimized.

Contour robust gripper

Due to the adaptive gripper even complex component geometries can be handled robustly. Thus, the application range of the machine is maximized.



Optimized handling

Due to the generous storage capacity of the magazines filling processes are reduced to a minimum while also avoiding open quantities. Furthermore, the magazines already enable a fixed hold of individual components during the loading procedure. Consequently, the components cannot fall over on the magazine.

Matching assortment

Based on the Weidmüller standard markers a suitable portfolio of the Klippon® Connect A-Series with pre-assembled markers is available. In combination with the Klippon® Automated RailLaser for fully automatic marking, the full optimization potential can be reached.

Consistent transparency

The consistent software support during all work steps assists the operator and ensuring transparency on the order status.

Technical data

Supply voltage	400V AC / 16 A / 3.25 kW
Dimensions machine (W × H × D)	2400 x 2100 x 2100 mm
Dimensions output platform (W × H × D)	2100 x 1400 x 1250 mm
Installation area (W × D)	5700 x 5700 mm
Weight	2200 + 200 kg output platform
Interfaces	USB, Ethernet
Software	Weidmüller Configurator WMC
Mounting rail length	100 - 1200 mm
Component magazine positions	48
Mounting rail magazine positions	20
Compressed air supply	6 bar / 1m³/h

Ordering data

Type	Order No.
RAILASSEMBLER	2738690000

More technical details and further labelling systems can be found at our website.



The perfect complement for our Klippon® Automated RailAssembler Klippon® Automated RailLaser



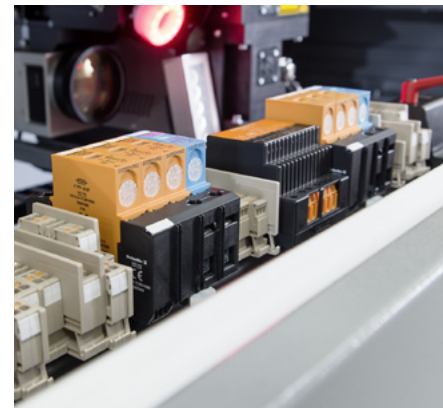
The core of the Klippon® Automated RailLaser is an image processing system that is used to measure the terminal strips before the marking process. It determines the actual position of each marker, compares it with the theoretical position from the digital model and carries out the corresponding corrections fully automatically. This ensures a perfect marking result even in case of position deviations – e.g. because of thermal expansion of the components or inaccurate clamp position due to manual assembly.



The following illustrations show the advantage of labelling using the image processing system of the Klippon® Automated RailLaser: The system ensures first-class marking results in various applications and guarantees a high-quality appearance of the terminal strip in the finished control cabinet.



Matching assortment



Reliable quality



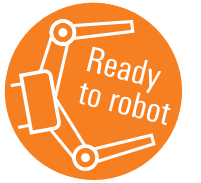
Ordering data

Type	Order No.
RAILLASER	2705010000

More technical details and further labelling systems can be found in our online catalogue.

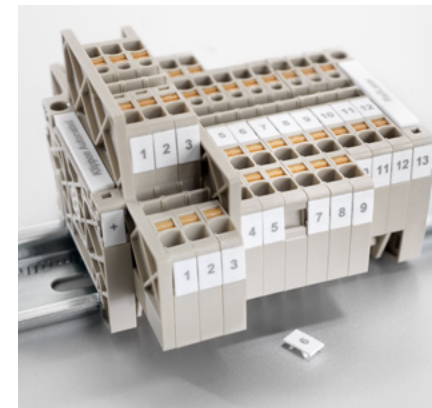


Klippon® Connect A-Series

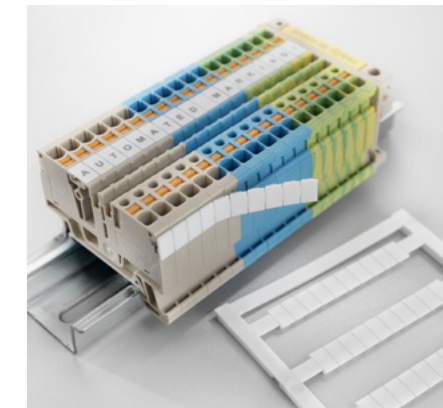


A coordinated portfolio of automatable terminal blocks enables the integration of the products into an efficient production process. With already pre-assembled markers they unfold the full optimization potential of the RailLaser. Let us take care of this time-consuming task for you.

Our Klippon® Connect A-Series has been designed to be ready-to-robot. Special features such as the gripper-optimised outer contours ensure safe handling with a robot.



Individual markers can easily be replaced



In addition, customers can also mount the markers themselves

Ordering data

Type	Order No.
A2C 1.5 DL	2674590000
A2C 1.5 DL BL	2674600000
A2C 1.5 PE DL	2674610000
A3C 1.5 DL	2674630000
A3C 1.5 DL BL	2674640000
A3C 1.5 PE DL	2674650000
A4C 1.5 DL	2674660000
A4C 1.5 DL BL	2674670000
A4C 1.5 PE DL	2674680000
A2C 2.5 DL	2674690000
A2C 2.5 DL BL	2674700000
A2C 2.5 PE DL	2674710000
A2T 2.5 DL	2675110000
A2T 2.5 DL BL	2675120000

Type	Order No.
A2T 2.5 PE DL	2675150000
A3C 2.5 DL	2674720000
A3C 2.5 DL BL	2674730000
A3C 2.5 PE DL	2674740000
A4C 2.5 DL	2674750000
A4C 2.5 DL BL	2674760000
A4C 2.5 PE DL	2674770000
A2C 4 DL	2674780000
A2C 4 DL BL	2674790000
A2C 4 PE DL	2674800000
A3C 4 DL	2674810000
A3C 4 DL BL	2674820000
A3C 4 PE DL	2674830000
A4C 4 DL	2674840000

Type	Order No.
A4C 4 DL BL	2674850000
A4C 4 PE DL	2674860000
AEB 35 SCL/1 VO DL	2570240000
AEB 35 SCL/1 VO BK DL	2570250000
AEB 35 SCL/1 VO GY DL	2570260000

You can find over 170 other articles in our online catalogue.



Weidmüller – Your partner in Industrial Connectivity

As experienced experts we support our customers and partners around the world with products, solutions and services in the industrial environment of power, signal and data. We are at home in their industries and markets and know the technological challenges of tomorrow. We are therefore continuously developing innovative, sustainable and useful solutions for their individual needs. Together we set standards in Industrial Connectivity.

We cannot guarantee that there are no mistakes in the publications or software provided by us to the customer for the purpose of making orders. We try our best to quickly correct errors in our printed media. All orders are based on our general terms of delivery, which can be reviewed on the websites of our group companies where you place your order. On demand we can also send the general terms of delivery to you.

Weidmüller Interface GmbH & Co. KG
Klingenbergstraße 26
32758 Detmold, Germany
T +49 5231 14-0
F +49 5231 14-292083
www.weidmueller.com

Personal support can
be found on our website:
www.weidmueller.com/contact

Made in Germany



Order number: 2737380000/01/2022/TCWM