



## P/H 170

### > Ring Cutter

#### Technical Specifications

**Circular cuts from 60 to 1500 mm in diameter**

**Circular cuts up to 10 mm deep**

**Rule with diameter scale**

**2 knives:** 1 knife  $\varnothing$  40mm (standard knife) and 1 knife  $\varnothing$  30mm (for small diameters)

**1 punch  $\varnothing$  15 mm** (conical punch for hard materials such as aramide fiber plates)

**1 punch  $\varnothing$  13 mm** (cylindrical punch for softer material such as graphite plates)

**2 Allen keys, 2 adjustable stops** for quick setting of inner and outer diameter when cutting gaskets of the same type

**Machine is maintenance-free!**

The machine cuts absolutely neatly, dimensionally accurately and with straight edges, all fibrous materials, PTFE, rubber, leather, cardboard, chipboard, felt, cork, graphite bonded or not bonded with high grade steel foil, firm plastics or similar stock.

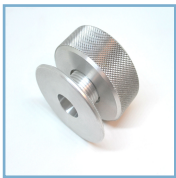
#### Mode of operation

Cutting tool is a circular knife driven by operation of the hand wheel. While cutting, the circular knife controlled by turns of the height adjusting handle penetrates into the material (depth of penetration depends on the nature of the material being cut). After each full revolution of the material, the knife further feeds down, until the material is finally cut through. For accurate diameter setting, a rule with diameter scale is fitted to the machine. A hole of 15 mm diameter has to be made at the centre of the gasket material. Smallest diameter for circular cuts and cutting time depend on type and thickness of the material to be cut.

## Weights and Dimensions | P/H 170

| Designation    | Dimensions         | Packing dimensions | Approx. Weight<br>net - gross |
|----------------|--------------------|--------------------|-------------------------------|
|                | in mm<br>L x W x H | in mm<br>L x W x H |                               |
| <b>P/H 170</b> | 1220 x 125 x 240   | 1270 x 200 x 320   | 6 - 7 kg                      |

### Accessories and spare parts



#### Centring attachment "ZH"

[Ref. No. 1359]

> for locating the blank plate in the case of inaccurate centre hole or soft material  
(incl. 1 punch Ø20mm)



#### Circular knife 30 x 1,2mm

[Ref. No. 1358]

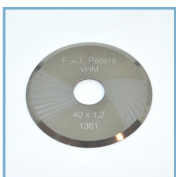
> for smallest diameters



#### Circular knife 40 x 1,2mm

[Ref. No. 1360]

> for circular and strip cuts up to 10mm thickness



#### Circular knife 40 x 1,2mm

[Ref. No. 1357]

[Illustrations and dimensions may be subject to changes as a result of technical progress]