

# SK-70

## FLOAT TYPE STEAM TRAP

### GENERAL FEATURES

Ayvaz SK-70 Float-operated Steam Traps are specifically designed to perform continuous condensate discharge that varies with the amount of condensate at the saturation temperature of steam. They are not affected by sudden and wide pressure changes. They are primarily used in systems where fast condensate discharge is required and it is undesirable to have condensate buildup in the pipeline. They are ideal for automatic temperature-controlled systems. In addition to the float that performs the discharge function, air venting is also carried out inside the body by a thermostatic capsule. This prevents water hammer caused by air accumulations in the pipeline. Moreover, in the event that the float loses its function for any reason, the thermostatic capsule comes into play and continues the condensate discharge, preventing blockages in the system.

**Connections:** Threaded, Flanged, or  
**Socket Nominal Diameter:** DN15 (1/2")  
- DN50 (2")

**Pressure Ratings:** Up to a maximum of 25 bar

**Operating Temperature:** Maximum operating temperature of 250 °C

#### Application

- Heat exchangers
- Heating coils
- Tanks
- Pans and trays
- Drying cylinders
- Ovens
- Pharmaceutical industry
- Chemical industry
- Food industry

These are some of the applications where Ayvaz SK-70 Float-operated Steam Traps can be used. They are versatile devices suitable for various industrial sectors that require efficient condensate drainage and air venting in steam systems.

#### Installation

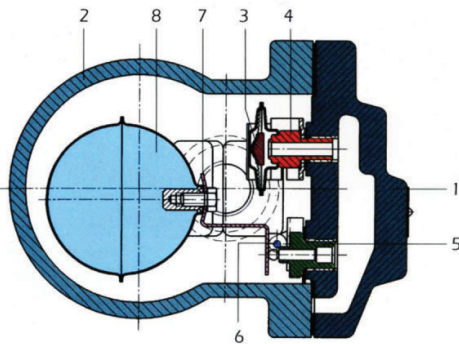
The Ayvaz SK-70 Float-operated Steam Trap can be installed in both horizontal and vertical orientations for sizes ranging from 1/2" to 1". However, for sizes from 1 1/4" to 2", it is suitable for horizontal installation only.

The adjustable design of the trap's cap allows for flexible mounting options depending on the specific requirements of your application.

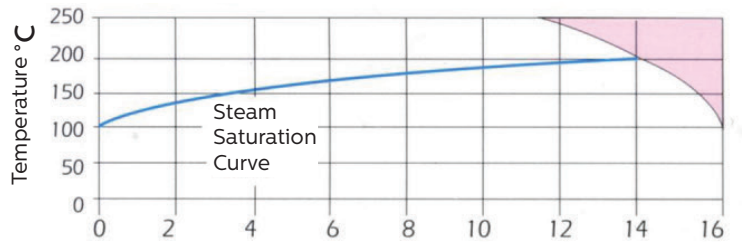
Connection	Flanged	Threaded
Dia (mm)	15-20-25	1/2"- 3/4"-1"
Weight (kg)	5.5-5.5-6.85	4.10-4.10-4.65

# SK-70 FLOAT TYPE STEAM TRAP

## DN15-25 TECHNICAL FEATURES

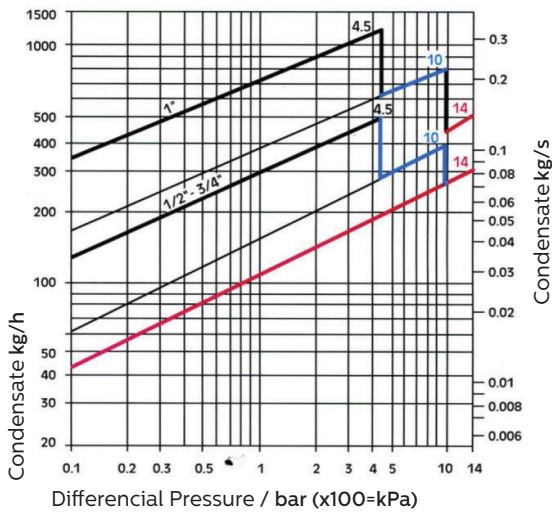


Operation Rate



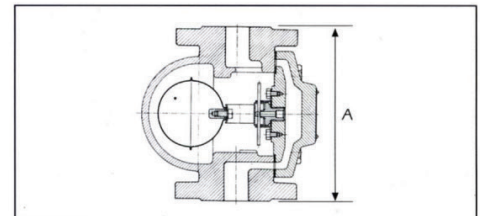
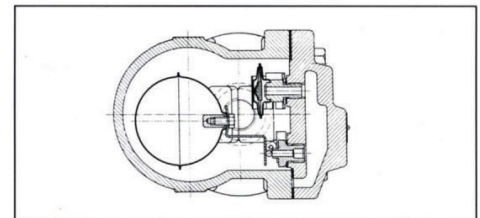
The product should not be used within this range.  
 $\Delta PMX$  Max. Pressure Difference

Discharge  
 (1/2"-3/4"-1")

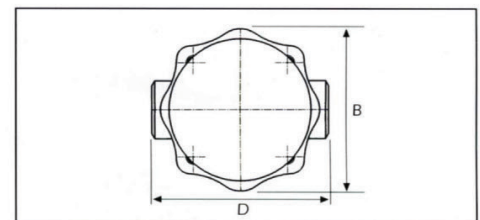
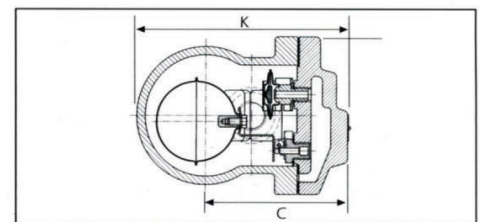


**Red Curve**  $\Delta p = 14$  bar  
**Blue Curve**  $\Delta p = 10$  bar  
**Black Curve**  $\Delta p = 4.5$  bar

FLANGE CONNECTION



THREADED CONNECTION

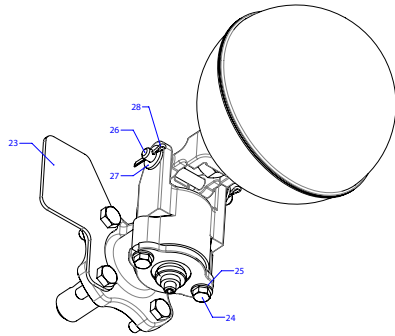
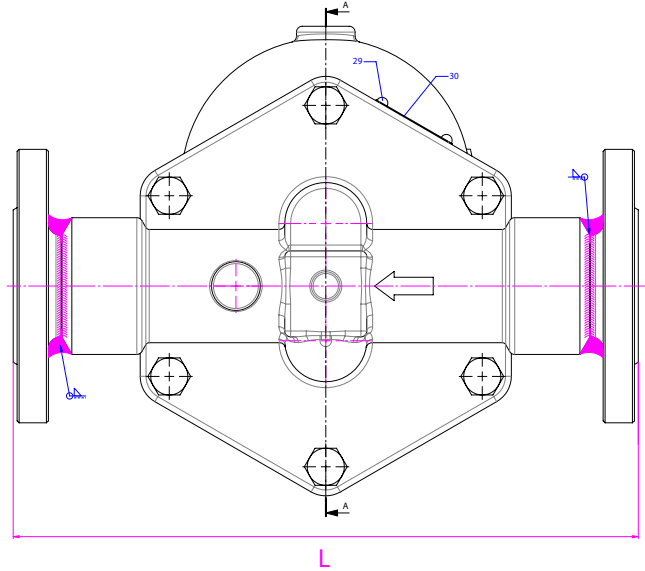
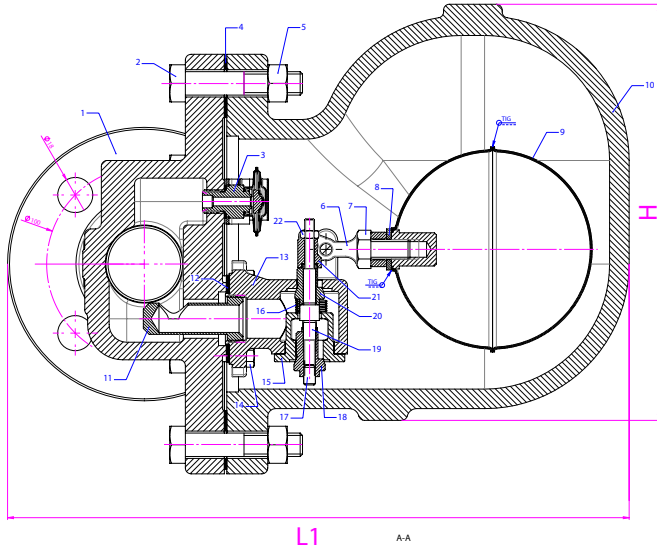


DIA	SIZE (mm)				
	A	K	B	C	D
15	150	150	108	68	122
20	150	150	108	68	122
25	160	167	108	107	145

No	PART	MATERIAL
1	Cover	Cast Steel-GSC-25
2	Body	Cast Steel-GSC-25
3	Thermostatic Capsule	Stainless Steel
4	Capsule Seat	Stainless Steel
5	Float Seat	Stainless Steel
6	Drain	Stainless Steel
7	Lever	Stainless Steel
8	Float	Stainless Steel

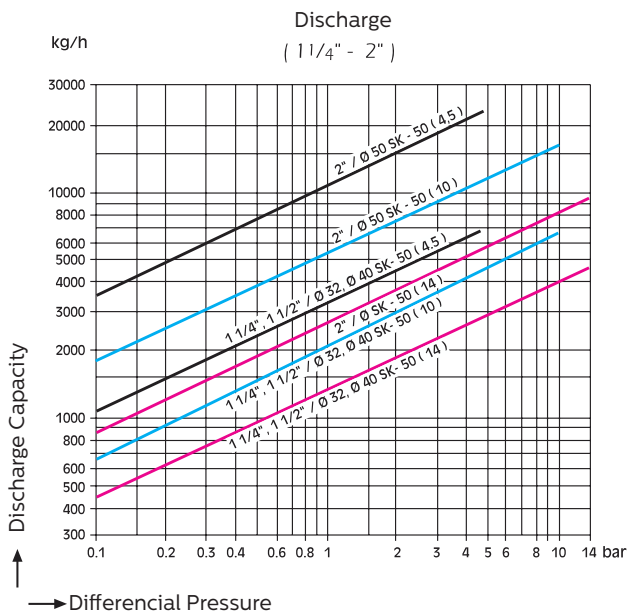
# SK-70 FLOAT TYPE STEAM TRAP

## DN32-50 FLANGED TECHNICAL FEATURES



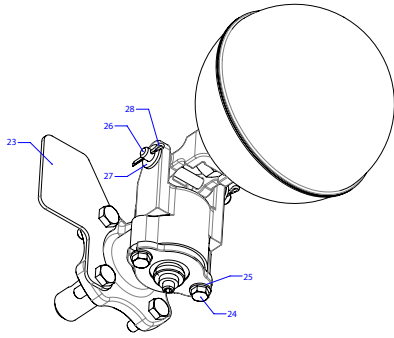
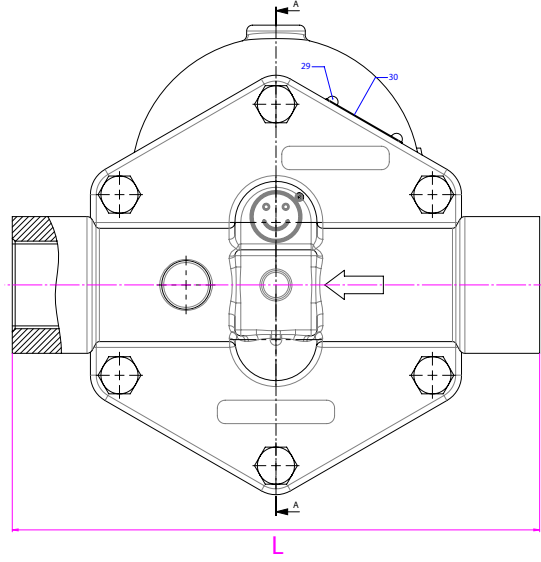
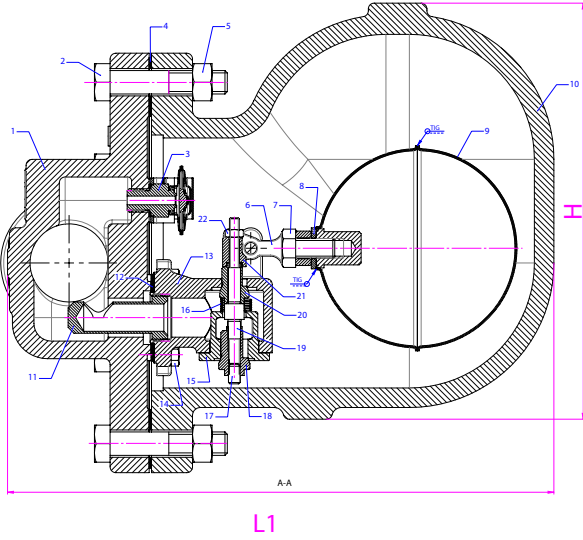
DN (mm)	L	H	L1
32	320	213	318
40	320	213	323
50	320	230	335

No	PART	MATERIAL
1	Body	GSC25
2	Bolt	8,8
3	Thermostatic Unit	
4	Cover Gasket	%94 Pure Graphite
5	Nut	8
6	Joint	
7	Nut	A2 70
8	Gasket	AISI304
9	Float	
10	Cover Gasket	GSC25
11	Erosion inhibitor	AISI304
12	Bearing seal	%94 Pure Graphite
13	Bearing	AISI430
14	Bolt	A2 70
15	Bearing Cover	1,4581
16	Spring	AISI302
17	Setscur	A2 70
18	Valve	AISI430
19	Bearing Stem	AISI304
20	Valve	AISI430
21	Roll	AISI304
22	Nut	A2
23	Balancing Part	AISI304
24	Bolt	A2 70
25	Gasket	AISI304
26	Float Connection Stem	AISI304
27	Gasket	AISI304
28	Joint	AISI304
29	Rivet	9,5
30	Label	Aluminium



# SK-70 FLOAT TYPE STEAM TRAP

1 1/4" - 2" THEREADED TECHNICAL FEAUTRES



İnç	L	H	L1
1 1/4"	270	213	280
1 1/2"	270	213	280
2"	300	230	290

No	PART	MATERIAL
1	Body	GSC25
2	Bolt	8,8
3	Thermostatic Unit	
4	Cover Gasket	%94 Pure Graphite
5	Nut	8
6	Joint	
7	Nut	A2 70
8	Gasket	AISI304
9	Float	
10	Cover Gasket	GSC25
11	Erosion inhibitor	AISI304
12	Bearing seal	%94 Pure Graphite
13	Bearing	AISI430
14	Bolt	A2 70
15	Bearing Cover	1,4581
16	Spring	AISI302
17	Setscur	A2 70
18	Valve	AISI430
19	Bearing Stem	AISI304
20	Valve	AISI430
21	Roll	AISI304
22	Nut	A2
23	Balancing Part	AISI304
24	Bolt	A2 70
25	Gasket	AISI304
26	Float Connection Stem	AISI304
27	Gasket	AISI304
28	Joint	AISI304
29	Rivet	9,5
30	Label	Aluminium