

CAST IRON SLEEVE FLANGED PN 10/16 DIN 3202 F4

Cast iron sleeve DIN 3202 F4 flanged PN10/16 for all common fluids of 2nd group.
Installed with a butterfly valve, could replace a flanged gate valve with the same length without modifications of the installation.
Drain DN1/2" BSP.



Size : DN40 to DN200
Connection : Flanges PN10/16 RF
Min Temperature : -10°C
Max Temperature : +150°C
Max Pressure : 16 Bars
Specifications : Length DIN 3202 F4
Brass drain DN1/2" removable

Materials : Cast iron EN GJL-250

CAST IRON SLEEVE FLANGED PN 10/16 DIN 3202 F4

SPECIFICATIONS :

- Length DIN 3202 F4 (with butterfly valve)
- Flanges R.F. PN10/16 up to DN150, PN10 for DN200
- With drain threaded 1/2" BSP
- The whole butterfly valve and sleeve allows to replace gate valve without modification
- Painting color grey RAL 7011, thickness 70-100µ

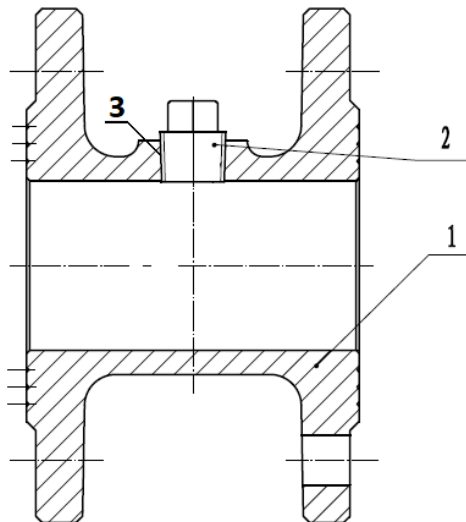
USE :

- For all common fluids of 2nd group
- Min Temperature Ts : - 10°C
- Max Temperature Ts :+ 150°C
- Max Pressure Ps : 16 bars

RANGE :

- Cast iron sleeve flanges R. F. PN10/16 from DN 40 to 150, PN10 for DN200 for length DIN 3202 F4 (EN 558 series 14) **Ref.1196**

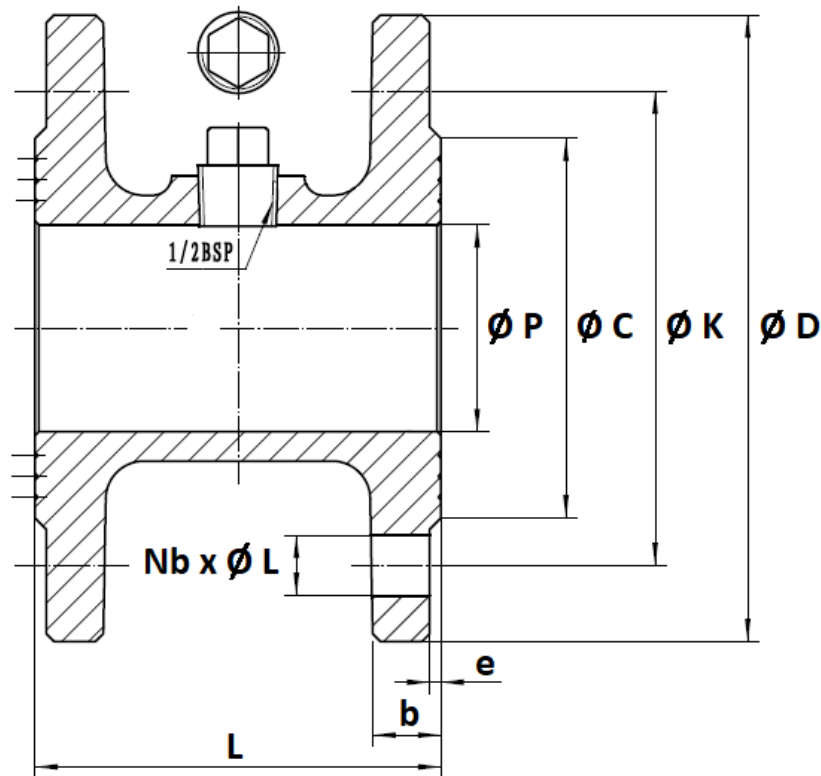
MATERIALS :



| Item | Designation | Materials |
|------|-------------|----------------------|
| 1 | Body | Cast iron EN GJL-250 |
| 2 | Drain | Brass |
| 3 | Gasket | PTFE coating |

CAST IRON SLEEVE FLANGED PN 10/16 DIN 3202 F4

SIZE (in mm) :



| DN | 40 | 50 | 65 | 80 | 100 | 125 | 150 | 200 |
|-------------|---------|---------|---------|---------|---------|---------|---------|---------|
| L | 107 | 107 | 124 | 134 | 138 | 144 | 154 | 170 |
| Ø P | 42.5 | 54.5 | 70.3 | 82.5 | 107.1 | 131.7 | 159.3 | 207.3 |
| Ø D | 150 | 165 | 185 | 200 | 220 | 250 | 285 | 340 |
| Ø K | 110 | 125 | 145 | 160 | 180 | 210 | 240 | 295 |
| Ø C | 88 | 100 | 122 | 138 | 159 | 181 | 210 | 266 |
| Nb x Ø L | 4 x 19 | 4 x 19 | 4 x 19 | 8 x 19 | 8 x 19 | 8 x 19 | 8 x 23 | 8 x 23 |
| e | 2 | 3 | 3 | 3 | 3 | 3 | 3.5 | 3.5 |
| b | 14 | 15 | 15 | 17 | 17 | 20 | 20 | 20 |
| Weight (Kg) | 4 | 5.2 | 7 | 8.4 | 10.6 | 13 | 17 | 25 |
| Ref. | 1196040 | 1196050 | 1196065 | 1196080 | 1196100 | 1196125 | 1196150 | 1196200 |

CAST IRON SLEEVE FLANGED PN 10/16 DIN 3202 F4

STANDARDS :

- Manufacturer certified ISO 9001 : 2015
- DIRECTIVE 2014/68/EU : Products excluded from directive (Article 4, § 3)
- For length DIN 3202 F4 (EN 558 series 14)
- Flanges R.F. according to EN 1092-2 PN10/16

ASSEMBLING EXAMPLE :



ADVICE : Our opinion and our advice are not guaranteed and SFERACO shall not be liable for the consequences of damages. The customer must check the right choice of the products with the real service conditions.