

CAST IRON SWING CHECK VALVE FLANGED PN16 DIN3202-1 F6 BRASS SEAT

Cast iron swing check valve with brass seat flanged PN10/16 for heating, water distribution and watering.
Cast iron body and disc, graphite bonnet gasket.
Bolted bonnet for an easy maintenance.

Certificate

3.1



Size : DN40 to DN300
Connection : Flanges RF PN10/16
Min Temperature : -10°C
Max Temperature : +120°C
Max Pressure : 16 Bars
Specifications : Swing check type
Brass seat
Bolted bonnet
Vertical or horizontal position

Materials : Cast iron body EN GJL-250

CAST IRON SWING CHECK VALVE FLANGED PN16 DIN3202-1 F6 BRASS SEAT

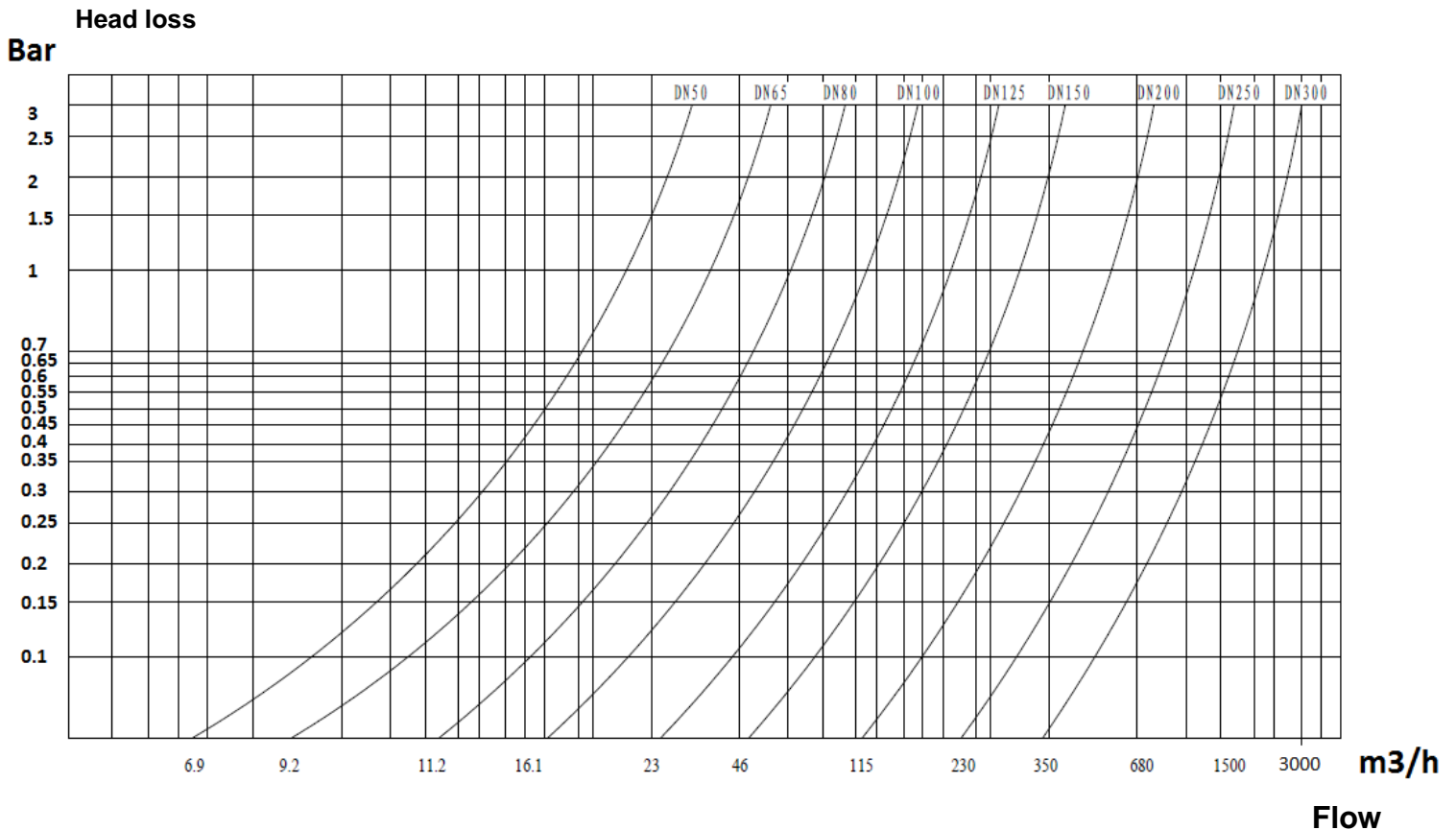
SPECIFICATIONS :

- Swing check type
- Vertical position with ascendant fluid or horizontal position (respect the flow direction indicated by the arrow)
- PN16 flanges R.F.
- Bolted bonnet
- Brass seat
- Painting Alkyde RAL 7011 grey color, 90 µm thickness

USE :

- Heating, water distribution and watering
- For common liquids of 2nd group
- Min and max Temperature Ts : - 10°C to + 120°C
- Max pressure Ps : 16 bars
- **Do not use with pulsatory speed**
- **Max Speed : 3 M. / Sec.**

HEAD LOSS GRAPH :

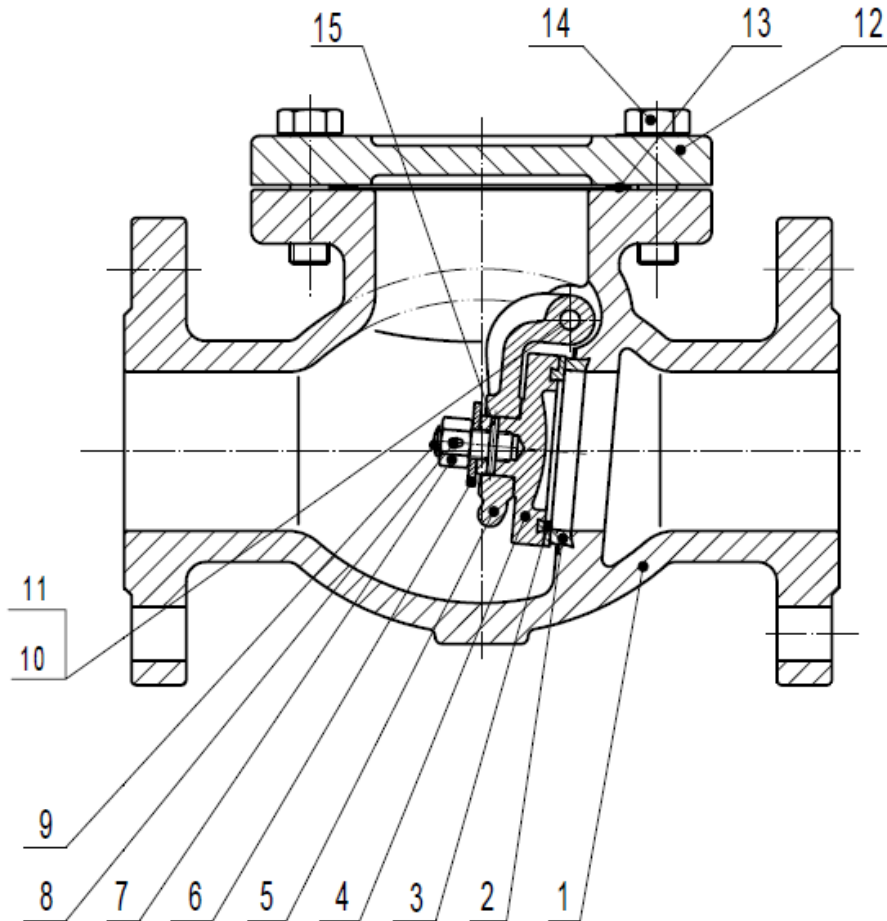


RANGE :

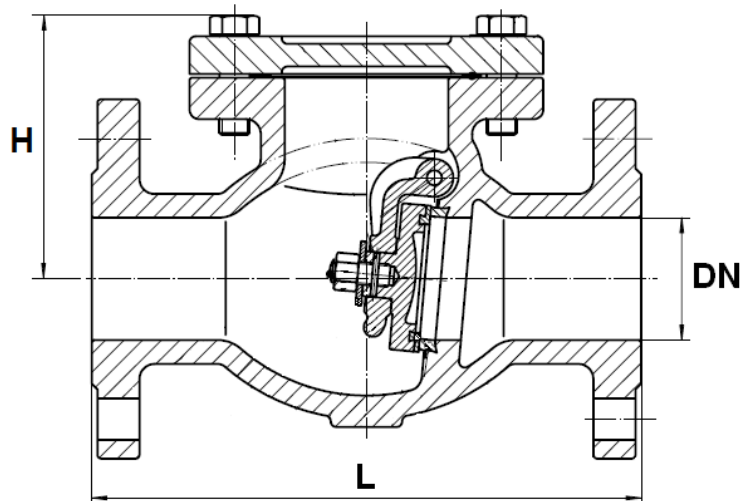
- Cast iron swing check valve with metal seat PN16 R.F. flanges **Ref. 360** from DN40 to 300

CAST IRON SWING CHECK VALVE FLANGED PN16 DIN3202-1 F6 BRASS SEAT

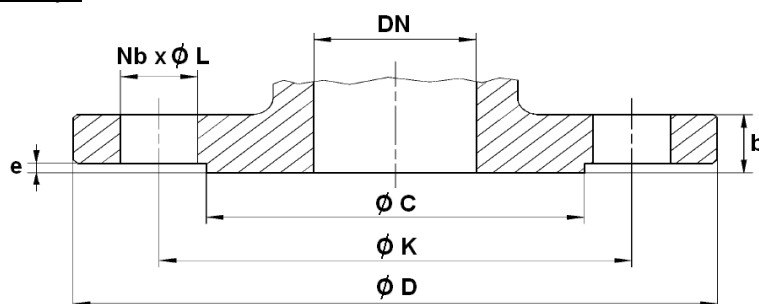
MATERIALS :



Item	Designation	Materials
1	Body	Cast iron EN GJL-250
2	Seat ring	Brass
3	Disc ring	Brass
4	Disc	Cast iron EN GJL-250
5	Hanger	Ductile iron EN GJS-400-15
6	Washer	Steel
7	Nut	Steel
8	Split Pin	AISI 304
9	Disc screw	Steel
10	Hexagon plug	Brass
11	Hanger pin	AISI 304
12	Bonnet	Cast iron EN GJL-250
13	Bonnet gasket	Graphite
14	Bonnet screw	Steel
15	Pin	AISI 304

CAST IRON SWING CHECK VALVE FLANGED PN16 DIN3202-1 F6 BRASS SEAT
SIZE (in mm) :


DN	40	50	65	80	100	125	150	200	250	300
L	180	200	240	260	300	350	400	500	600	700
H	109	112	132	141	162	192	211	270	316	357
Weight (Kg)	8.5	11.2	15.5	19	28.5	42.2	57	93	159	215
Ref.	360040	360050	360065	360080	360100	360125	360150	360200	360250	360300

FLANGES SIZE (in mm) :


PN	PN10/16							PN16		
DN	40	50	65	80	100	125	150	200	250	300
Ø C	84	99	118	132	156	184	211	266	319	370
Ø D	150	165	185	200	220	250	285	340	405	460
Ø K	110	125	145	160	180	210	240	295	355	410
Nb x Ø L	4 x 19	4 x 19	4 x 19	8 x 19	8 x 19	8 x 19	8 x 23	12 x 23	12 x 28	12 x 28
b	18	20	20	22	24	26	26	30	32	32
e	3	3	3	3	3	3	3	3	3	4

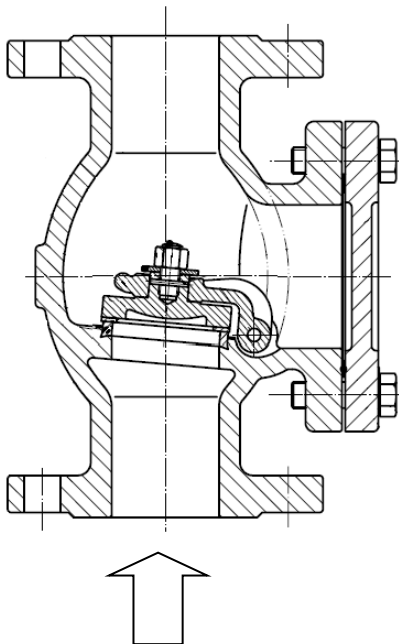
CAST IRON SWING CHECK VALVE FLANGED PN16 DIN3202-1 F6 BRASS SEAT

STANDARDS :

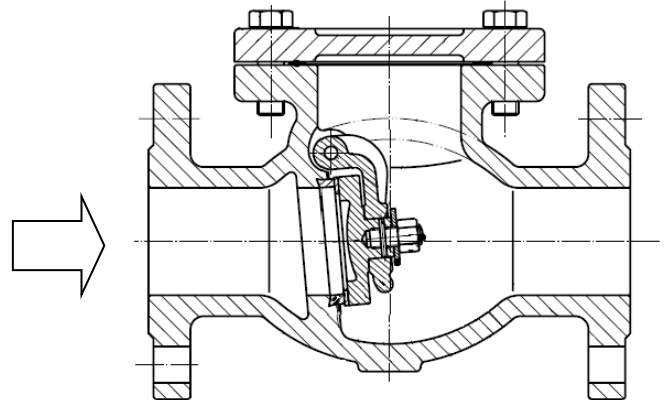
- Manufacturer certified ISO 9001: 2015
- DIRECTIVE 2014/68/EU : Products excluded (article 4, § 3)
- Design according to DIN EN 12334
- Certificate 3.1 on request
- Pressure tests according to EN 12266-1, Rate C
- Length according to EN 558 series 48 (DIN 3202 F6)
- PN16 R.F. flanges according to EN 1092-2

INSTALLATION POSITIONS :

Vertical position (ascendant fluid)



Horizontal position



ADVICE : Our opinion and our advice are not guaranteed and SFERACO shall not be liable for the consequences of damages. The customer must check the right choice of the products with the real service conditions.