

CAST IRON FOOT AXIAL DISC CHECK VALVE EPDM WITH SPRING FLANGED PN16 ACS

Cast iron foot axial disc check valve for drinking water, heating and water distribution.
Cast iron EN GJL-250 body coated with anti-corrosion epoxy painting, ductile iron disc and EPDM seat.
Vertical position.
Steel strainer basket, 6 mm mesh.



Size : DN50 to DN300
Connection : Between flanges PN10/16 RF
Min Temperature : -10°C
Max Temperature : +120°C
Max Pressure : 16 Bars up to DN300
Specifications : Disc type
Vertical position
Stainless steel spring
Epoxy painting
Weak headloss

Materials : Cast iron EN GJL-250 body or ductile EN GJS-400-15

CAST IRON FOOT AXIAL DISC CHECK VALVE EPDM WITH SPRING FLANGED PN16 ACS

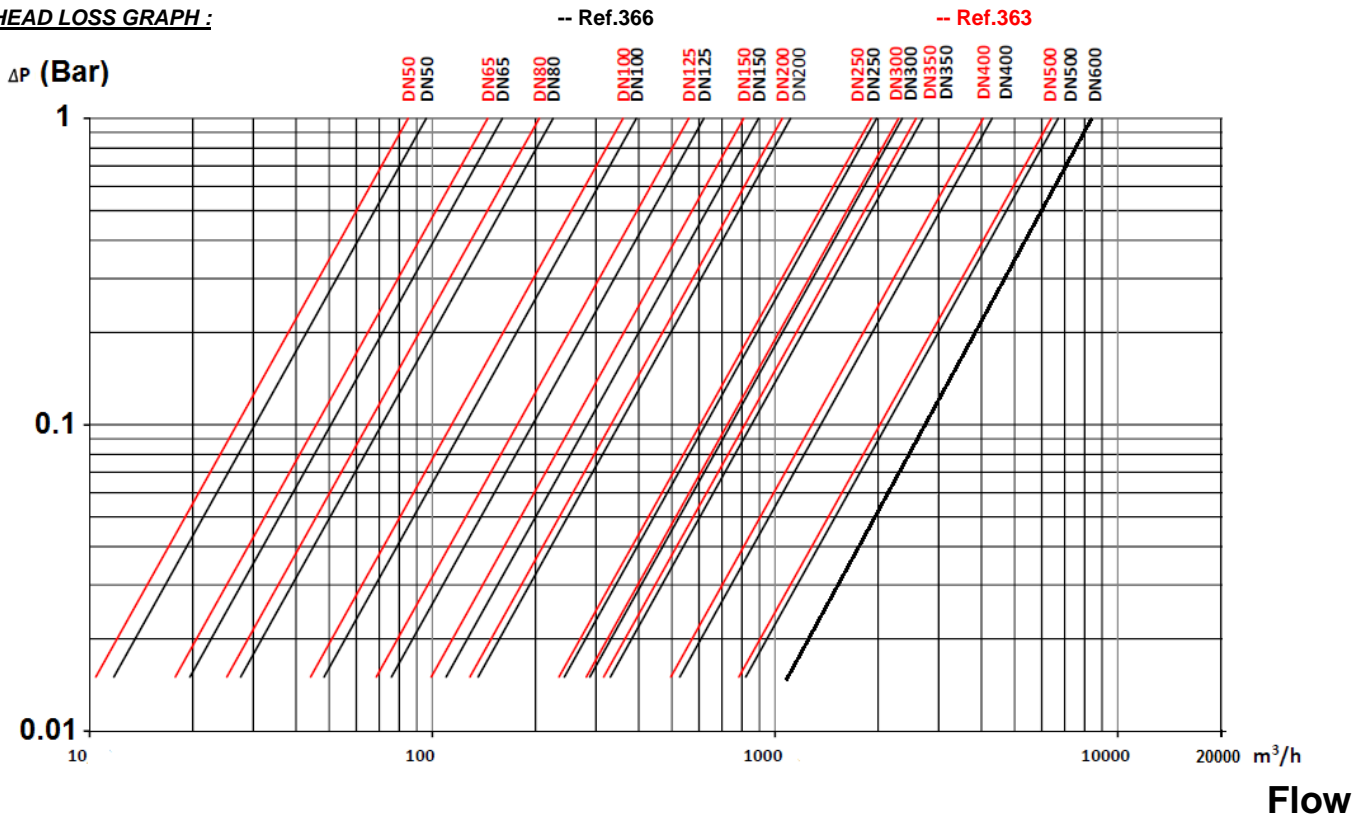
SPECIFICATIONS :

- Disc check valve type
- Respect the flow direction indicated by an arrow on the body
- Flanges R.F. PN10/16 up to DN150, PN16 from DN200 to DN300
- Weak head loss thanks to the cylindrical internal designing
- Anti-corrosion epoxy painting blue color RAL 5017, 100 μ thickness
- Bronze bushing to avoid blocking of the disc
- Drilled boss on request for bypass or to check the thickness
- Disc designed for a better hydrodynamism
- Silent solution
- Minimum back pressure for tightness : 0.2 bars
- Steel strainer basket, 6 mm mesh

USE :

- Water distribution
- Min Temperature Ts : - 10°C
- Max Temperature Ts : + 120°C
- Max Pressure Ps : 16 bars

HEAD LOSS GRAPH :



FLOW COEFFICIENT Kvs (in m3/h) :

| DN | 50 | 65 | 80 | 100 | 125 | 150 | 200 | 250 | 300 |
|------------|----|-----|-----|-----|-----|-----|-----|------|------|
| Kvs (m3/h) | 86 | 143 | 201 | 351 | 553 | 801 | 980 | 1750 | 2115 |

CAST IRON FOOT AXIAL DISC CHECK VALVE EPDM WITH SPRING FLANGED PN16 ACS
RANGE :

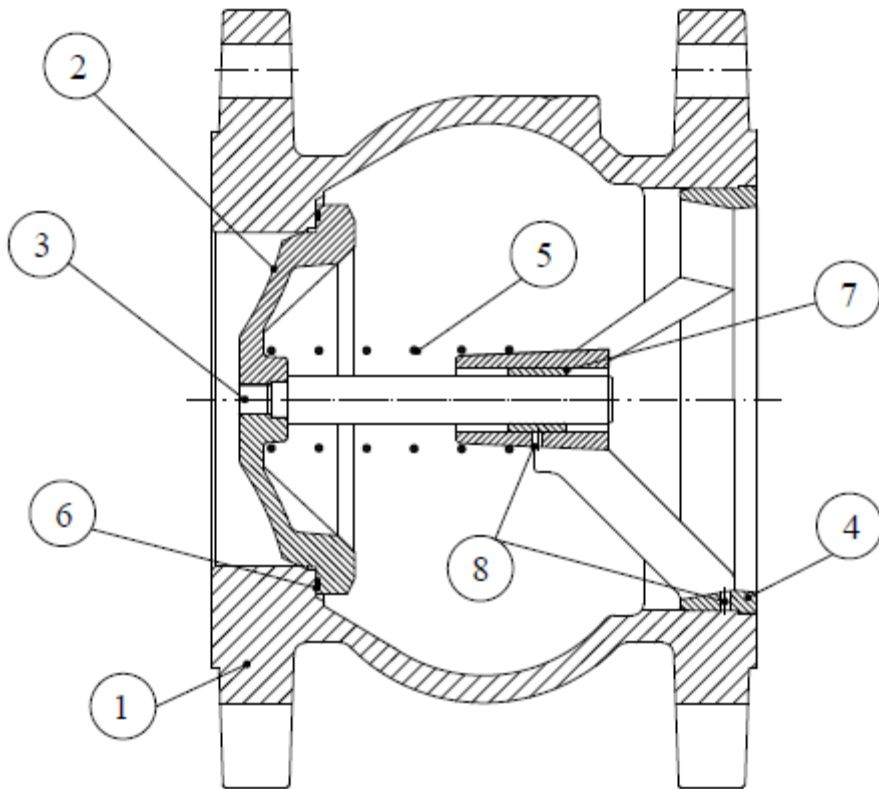
- Flanged foot disc check valve PN10/16 from DN50 to DN 150, PN16 from DN 200 to DN 300 **Ref. 363**

OPENING PRESSURE (mbar) :

| DN | Vertical Position ascending fluid | Horizontal Position |
|--------|--------------------------------------|---------------------|
| DN 50 | 55 ↑ | 40 → |
| DN 65 | 52 ↑ | 35 → |
| DN 80 | 52 ↑ | 34 → |
| DN 100 | 53 ↑ | 35 → |
| DN 125 | 65 ↑ | 46 → |
| DN 150 | 66 ↑ | 48 → |
| DN 200 | 76 ↑ | 55 → |
| DN 250 | 91 ↑ | 62 → |
| DN 300 | 90 ↑ | 58 → |
| DN 350 | 91 ↑ | 59 → |
| DN 400 | 106 ↑ | 70 → |
| DN 500 | 114 ↑ | 72 → |
| DN 600 | 155 ↑ | 92 → |

CAST IRON FOOT AXIAL DISC CHECK VALVE EPDM WITH SPRING FLANGED PN16 ACS

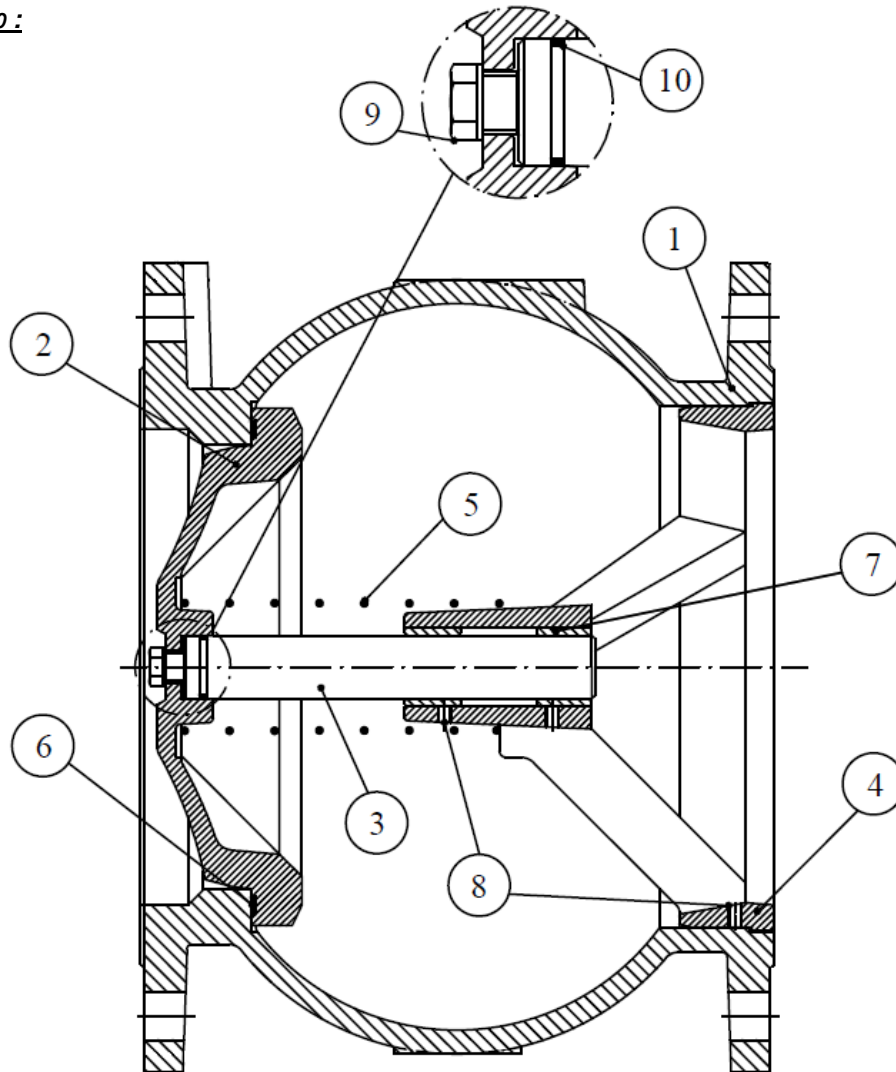
MATERIALS DN 50 - 100 :



| Item | Designation | Materials |
|------|-------------|----------------------------|
| 1 | Body | Cast iron EN-GJL-250 |
| 2 | Disc | Ductile iron EN-GJS-400-15 |
| 3 | Stem | AISI 304L |
| 4 | Guide | Ductile iron EN-GJS-400-15 |
| 5 | Spring | AISI 302 |
| 6 | Gasket | EPDM |
| 7 | Bushing | Bronze |
| 8 | Pin | AISI 304 |

CAST IRON FOOT AXIAL DISC CHECK VALVE EPDM WITH SPRING FLANGED PN16 ACS

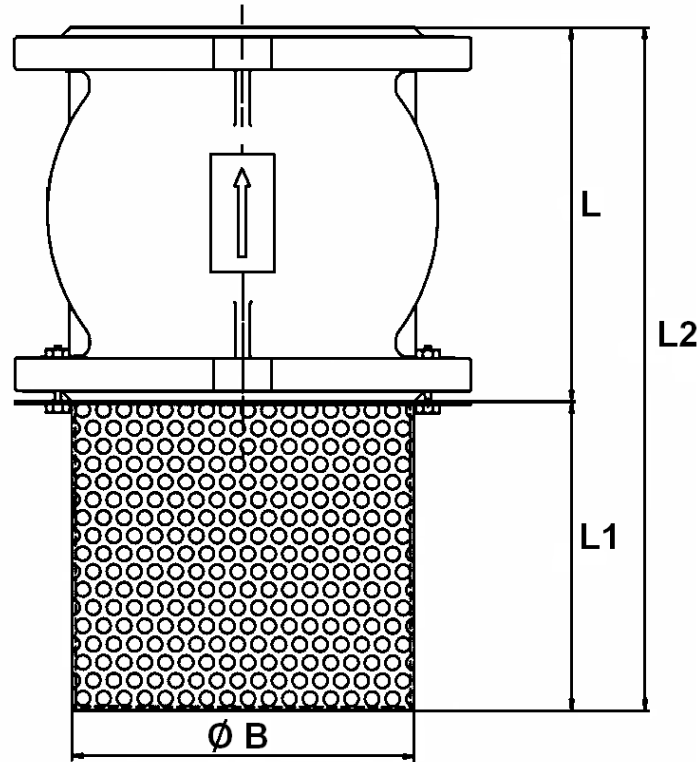
MATERIALS DN 125 - 300 :



| Item | Designation | Materials DN125-200 | Materials DN250-300 |
|------|-------------|----------------------------|----------------------------|
| 1 | Body | Cast iron EN-GJL-250 | Ductile iron EN-GJS-400-15 |
| 2 | Disc | Ductile iron EN-GJS-400-15 | Ductile iron EN-GJS-400-15 |
| 3 | Stem | AISI 304L | AISI 304 |
| 4 | Guide | Ductile iron EN-GJS-400-15 | Ductile iron EN-GJS-400-15 |
| 5 | Spring | AISI 302 | AISI 302 |
| 6 | Gasket | EPDM | EPDM |
| 7 | Bushing | Bronze | Bronze |
| 8 | Pin | AISI 304 | AISI 304 |
| 9 | Nut | AISI 304 | AISI 304 |
| 10 | O ring | EPDM | EPDM |

CAST IRON FOOT AXIAL DISC CHECK VALVE EPDM WITH SPRING FLANGED PN16 ACS

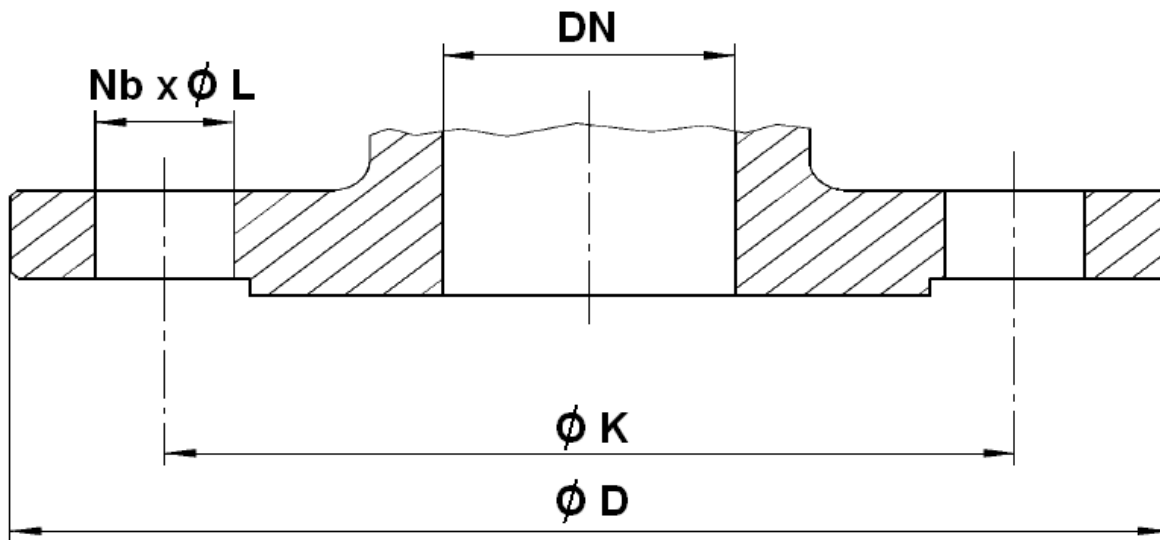
SIZE (mm) :



| DN | 50 | 65 | 80 | 100 | 125 | 150 | 200 | 250 | 300 |
|-------------|--------|--------|--------|--------|--------|--------|--------|--------|--------|
| L | 105 | 120 | 140 | 165 | 195 | 230 | 290 | 355 | 400 |
| L1 | 77 | 110 | 125 | 155 | 170 | 220 | 300 | 390 | 410 |
| L2 | 182 | 230 | 265 | 320 | 365 | 450 | 590 | 745 | 810 |
| Ø B | 93 | 113 | 128 | 148 | 178 | 200 | 255 | 310 | 360 |
| Mesh | 6 | 6 | 6 | 6 | 6 | 6 | 6 | 6 | 6 |
| Weight (Kg) | 6.01 | 8.98 | 10.95 | 14.73 | 21 | 28.88 | 49.58 | 81.58 | 133.38 |
| Ref. | 363050 | 363065 | 363080 | 363100 | 363125 | 363150 | 363200 | 363250 | 363300 |

CAST IRON FOOT AXIAL DISC CHECK VALVE EPDM WITH SPRING FLANGED PN16 ACS

FLANGES SIZE (in mm) :



| DN | 50 | 65 | 80 | 100 | 125 | 150 | 200 | 250 | 300 |
|----------|--------|--------|--------|--------|--------|--------|---------|---------|---------|
| Ø D | 165 | 185 | 200 | 220 | 250 | 285 | 340 | 405 | 460 |
| Ø K | 125 | 145 | 160 | 180 | 210 | 240 | 295 | 355 | 410 |
| Nb x Ø L | 4 x 19 | 4 x 19 | 8 x 19 | 8 x 19 | 8 x 19 | 8 x 23 | 12 x 23 | 12 x 28 | 12 x 28 |

STANDARDS :

- Manufacturer certified ISO 9001: 2015 and ISO 14001 : 2015
- DIRECTIVE 2014/68/EU : Products excluded from directive (Article 1, § 2b)
- French water agreement **A.C.S. N° 20 ACC LY 724**
- Pressure Tests according to ISO 5208, Rate A
- Flanges according to EN 1092-2 PN10-PN16

ADVICE : Our opinion and our advice are not guaranteed and SFERACO shall not be liable for the consequences of damages. The customer must check the right choice of the products with the real service conditions.