

CAST IRON DUAL PLATE CHECK VALVE STAINLESS STEEL DISC ACS EPDM SEAT

Cast iron dual plate check valve for drinking water, heating and water distribution.

Cast iron EN GJL-250 body coated with anti-corrosion epoxy painting, stainless steel disc and vulcanized EPDM ACS seat.

Wafer type with short length and with a hoisting eye from DN200 to 300 for easy installation.



Size : DN50 to DN300

Connection : Between flanges PN10/16, Class 150 (PN20)

Min Temperature : -10°C

Max Temperature : +110°C

Max Pressure : 16 Bars

Specifications : EPDM ACS vulcanized seat

Horizontal or vertical position with ascendant fluid

Wafer type

Hoisting eye from DN200 to 300

Weak headloss

Materials : Cast iron EN GJL-250 body

CAST IRON DUAL PLATE CHECK VALVE STAINLESS STEEL DISC ACS EPDM SEAT

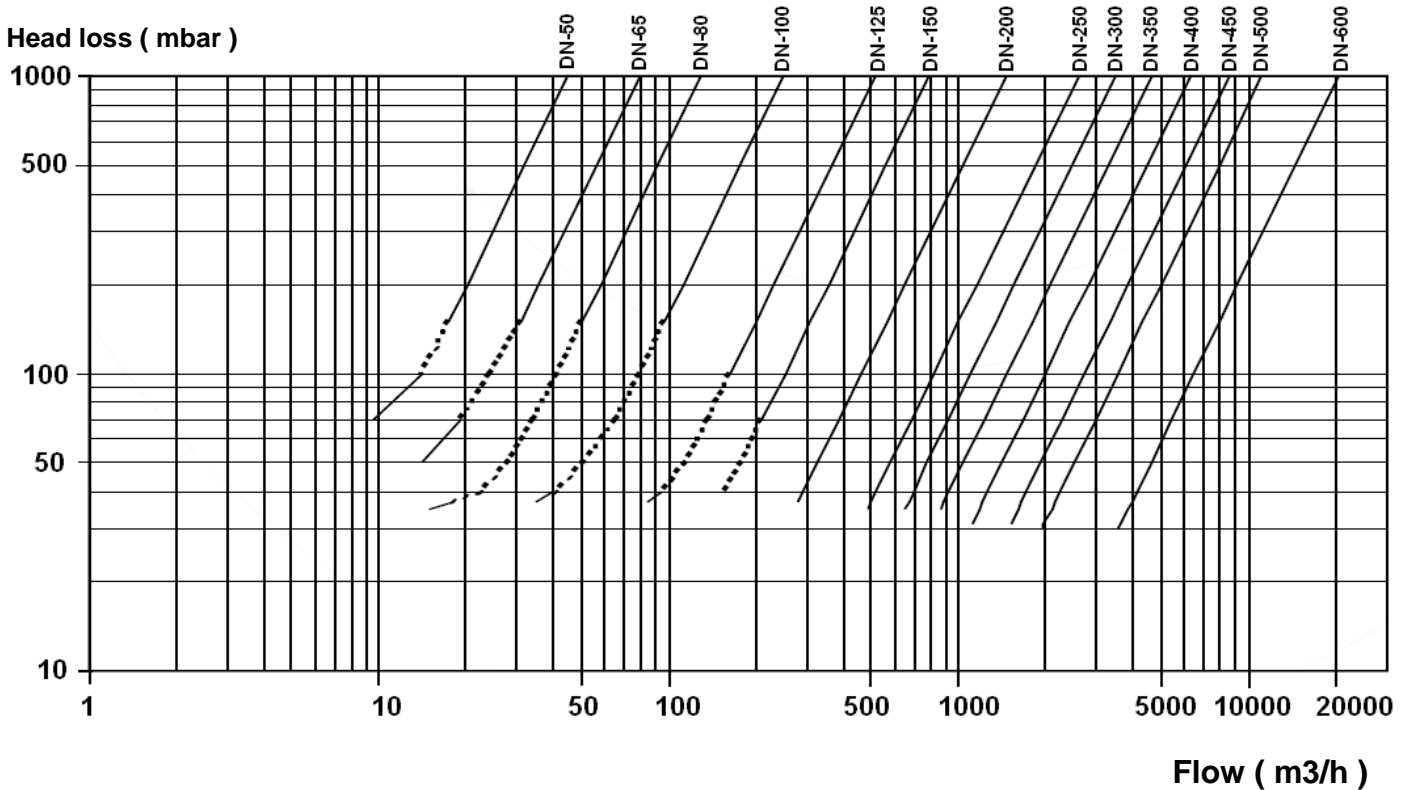
SPECIFICATIONS :

- Vulcanized gasket
- Hoisting eye from DN200 to 300
- Short length
- Anti-corrosion stainless steel spring
- Weak head loss
- Vertical position with ascendant fluid or horizontal position (respect the flow direction indicated by the arrow)
- Between flanges PN10/16, and Class 150 PN20
- From DN50 to DN80 : 4 holes on the body to be compatible Class 150 (PN20)
- Anti-corrosion epoxy painting RAL5005 200 microns thickness for body
- Minimum backpressure for tightness : 2 bars

USE :

- Drinking water, Heating, water distribution
- Min and max Temperature Ts : - 10°C to + 110°C
- Max Pressure Ps : 16 bars
- **Do not use with pulsatory speed**

HEAD LOSS GRAPH :



OPENING PRESSURE (in mbar) :

DN	50	65	80	100	125	150	200	250	300
Horizontal position	230	94	190	280	160	79	41	38	31
Vertical position ascend. fluid	260	114	230	320	180	95	57	58	56

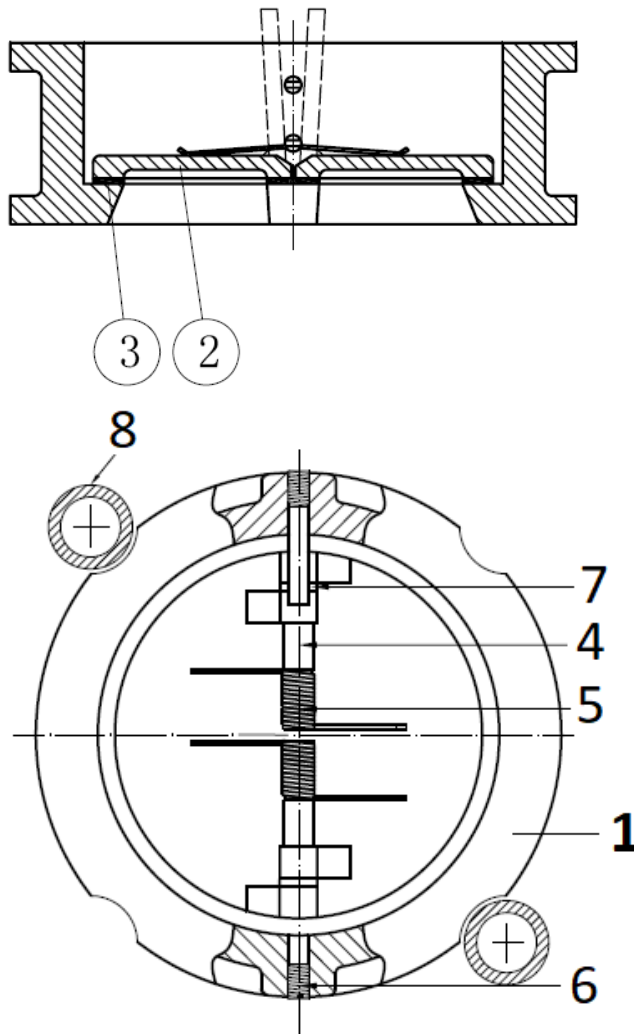
CAST IRON DUAL PLATE CHECK VALVE STAINLESS STEEL DISC ACS EPDM SEAT

RANGE :

- Dual plate check valve with cast iron body and stainless steel disc between flanges PN10/16 Ref. 375 From DN50 to DN 300
- Between flanges Class 150 PN20 possible
- From DN50 to DN80, 4 holes on the body to be compatible Class 150 (PN20)

For the connection PN10/16 in DN50 with holes, use the 2 rings for a good centering

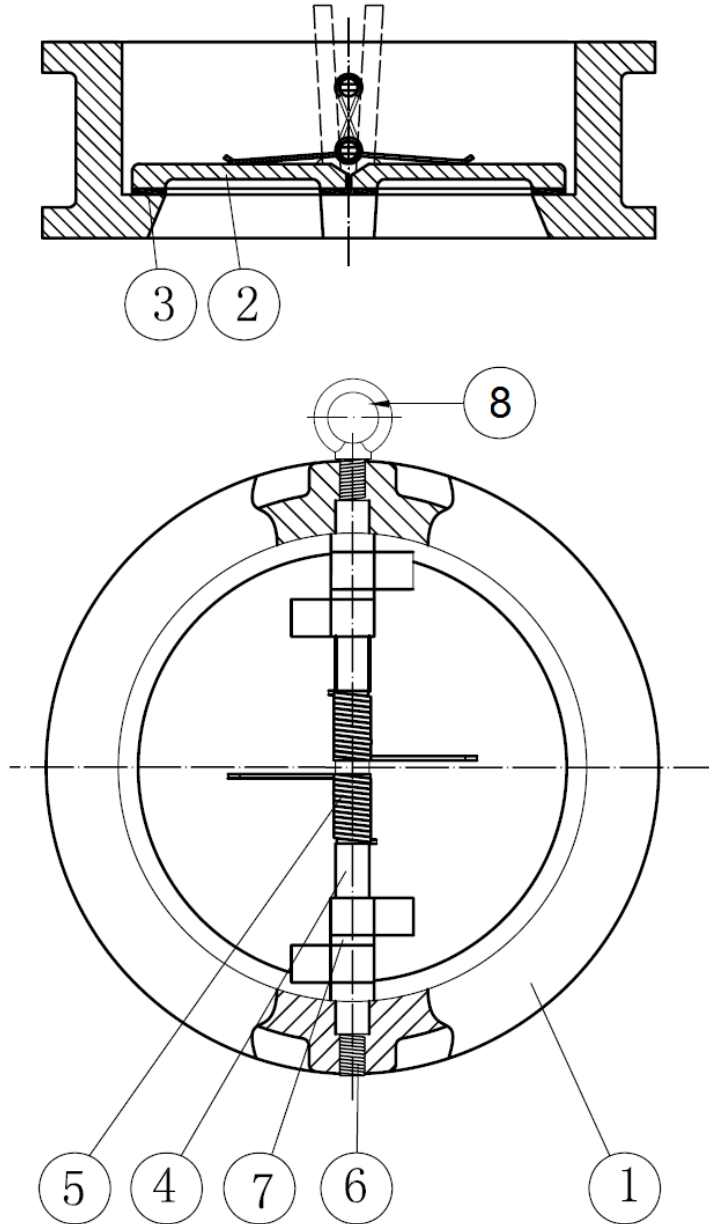
MATERIALS DN50-80 :



Item	Designation	Materials
1	Body	Cast iron EN-GJL 250
2	Disc	ASTM A351 CF8M
3	Seat	EPDM ACS
4	Shaft	AISI 316
5	Spring	
6	Screw	Galvanized carbon steel
7	Spacer	AISI 316
8 (only for DN50)	Ring	PPR

CAST IRON DUAL PLATE CHECK VALVE STAINLESS STEEL DISC ACS EPDM SEAT

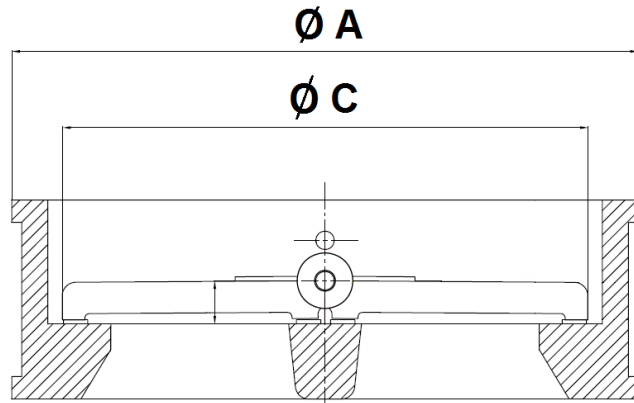
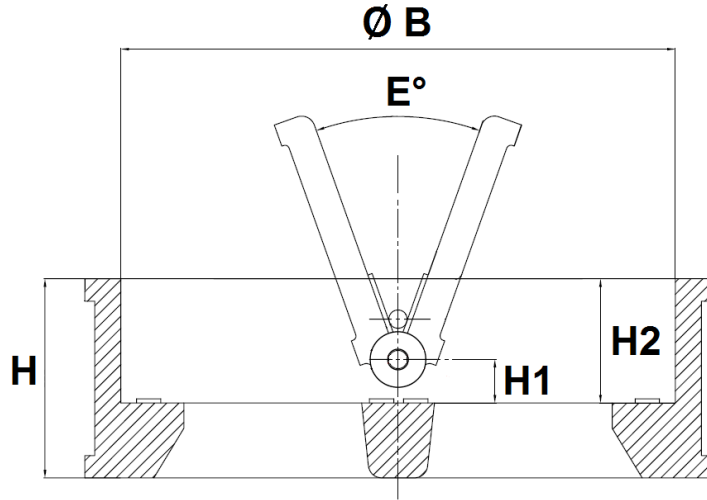
MATERIALS DN100 - 300 :



Item	Designation	Materials
1	Body	Cast iron EN-GJL 250
2	Disc	ASTM A351 CF8M
3	Seat	EPDM ACS
4	Shaft	AISI 316
5	Spring	
6	Screw	Galvanized carbon steel
7	Spacer	AISI 316
8	Hoisting eye (from DN200 to 600)	AISI 304

CAST IRON DUAL PLATE CHECK VALVE STAINLESS STEEL DISC ACS EPDM SEAT

SIZE (in mm) :



DN	50	65	80	100	125	150	200	250	300
H	54	54	57	64	70	76	95	108	143
H1	14.4	16.9	19.9	21	22.3	22.5	28	34	37
H2	43	43	45	47	51	54	69	71	100
Ø A	109	129	144	164	194	220	275	330	380
Ø B	70.5	83.5	91.5	115.5	142.5	169.5	220.5	275.5	325.5
Ø C	60.5	75.8	80.5	104.5	130.3	155.9	201.2	257.2	303.3
E°	0°	0°	0°	0°	0°	0°	0°	0°	0°
Weight (Kg)	1.62	2.3	3.14	4.5	6.7	9.05	16	26.9	38.9
Ref.	375050	375065	375080	375100	375125	375150	375200	375250	375300

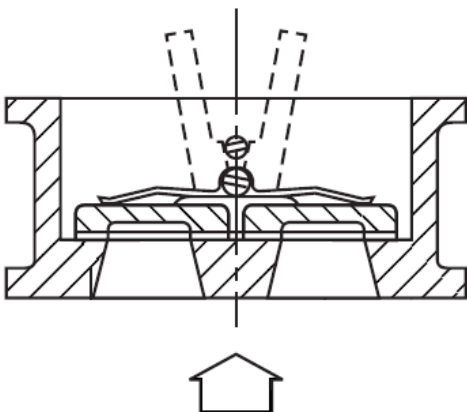
CAST IRON DUAL PLATE CHECK VALVE STAINLESS STEEL DISC ACS EPDM SEAT

STANDARDS :

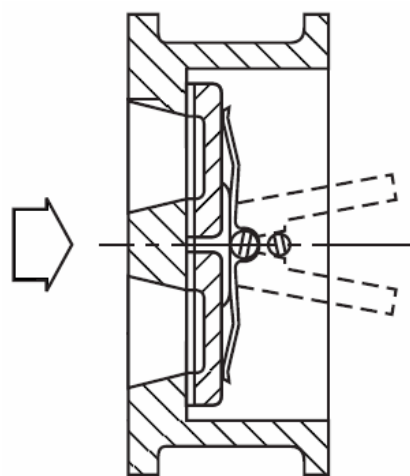
- Manufacturer certified ISO 9001 : 2015
- DIRECTIVE 2014/68/EU : For liquids and gas of Group 1
 - DN40-50 : Risk category I, CE marking
 - DN65-200 : Risk Category II, CE 0035 marking
 - DN250-300 : Risk Category III, CE 0035 marking
- Certificate 3.1 on request
- Designing according to API 594
- Pressure tests according to API 598, table 6
- Length according to EN 558 Series 50
- Between flanges according to EN 1092-1 PN10/16
- French water agreement **A.C.S. N° 20 ACC LY 508**
- Check valves according to LR Rules and Regulation for the classification of Ships, July 2019 (Type Approval Certificate) **Marine LLOYD'S REGISTER**. LR Type Approval System Test Specification Number 2, Chapter 8, Appendix 7-Valves :
 - BS EN 12266-1 : 2003
 - ISO 52008:2008
 - BS EN 1561
 - BS EN 1563
 - ASTM A431

INSTALLATION POSITIONS :

Vertical position (ascendant fluid)



Horizontal position



ADVICE : Our opinion and our advice are not guaranteed and SFERACO shall not be liable for the consequences of damages. The customer must check the right choice of the products with the real service conditions.