

DUCTILE IRON DUAL PLATE CHECK VALVE ALUMINIUM BRONZE DISC NBR SEAT

Aluminium bronze dual plate check valve for sea water, heating and water distribution.

Ductile iron EN GJS-400-15 body coated with anti-corrosion epoxy painting, aluminium bronze disc and vulcanized NBR seat.

Wafer type with short length and with a hoisting eye from DN200 to 350 for easy installation.



Size : DN50 to DN350

Connection : Between flanges PN10/16, Class 150 (PN20)

Min Temperature : -10°C

Max Temperature : +80°C

Max Pressure : 16 Bars up to DN300

Specifications : NBE vulcanized seat

Horizontal or vertical position with ascendant fluid

Wafer type

Hoisting eye from DN200 to 350

Weak headloss

Materials : Ductile iron EN GJS-400-15 body

DUCTILE IRON DUAL PLATE CHECK VALVE ALUMINIUM BRONZE DISC NBR SEAT

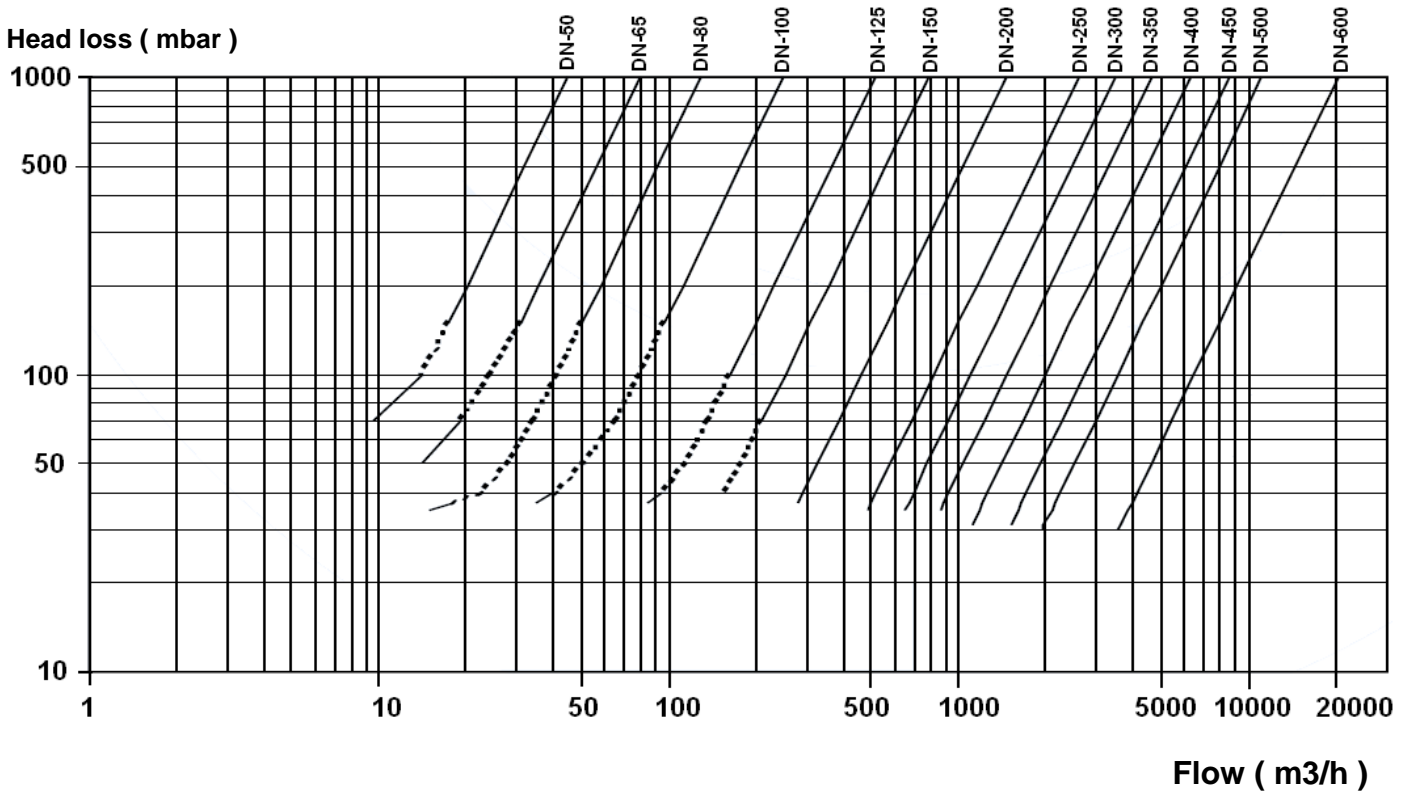
SPECIFICATIONS :

- Vulcanized gasket
- Hoisting eye from DN200 to 350
- Short length
- Anti-corrosion stainless steel spring
- Weak head loss
- Vertical position with ascendant fluid or horizontal position (respect the flow direction indicated by the arrow)
- Between flanges PN10/16 and Class 150 PN20
- From DN50 to DN80 : 4 holes on the body to be compatible Class 150 (PN20)
- Epoxy painting RAL5005 80 microns thickness for the body
- Bronze-Aluminium ASTM B148 C954 plates
- Minimum backpressure for tightness : 2 bars

USE :

- Heating, water distribution
- Min and max Temperature Ts : - 10°C to + 80°C
- Max Pressure Ps : 16 bars up to DN300
- **Do not use with pulsatory speed**

HEAD LOSS GRAPH :



OPENING PRESSURE (in mbar) :

| DN | 50 | 65 | 80 | 100 | 125 | 150 | 200 | 250 | 300 |
|---------------------------------|-----|-----|-----|-----|-----|-----|-----|-----|-----|
| Horizontal position | 230 | 94 | 190 | 280 | 160 | 79 | 41 | 38 | 31 |
| Vertical position ascend. fluid | 260 | 114 | 230 | 320 | 180 | 95 | 57 | 58 | 56 |

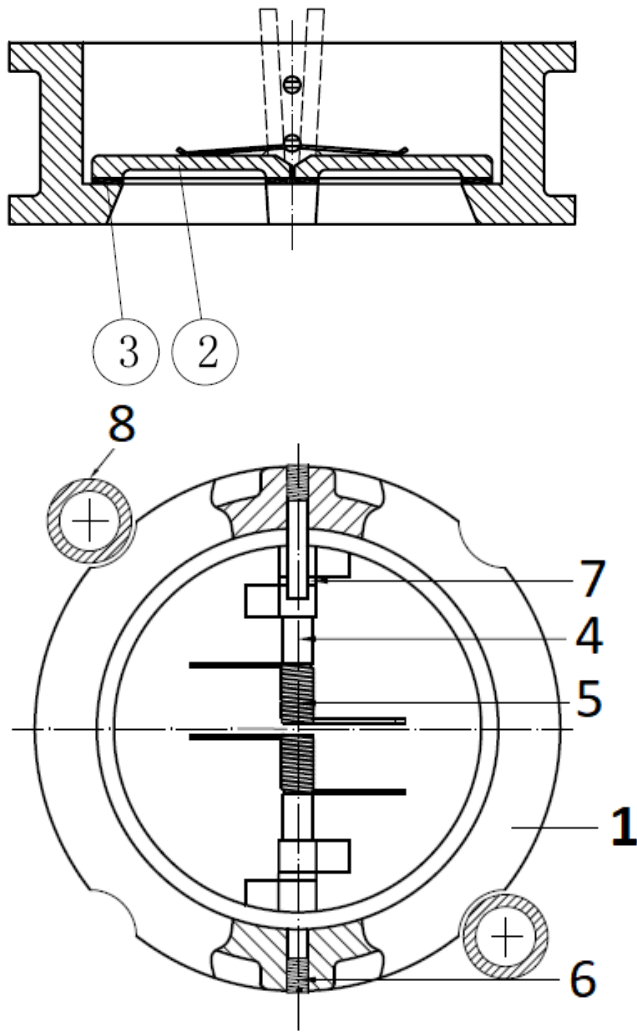
DUCTILE IRON DUAL PLATE CHECK VALVE ALUMINIUM BRONZE DISC NBR SEAT

RANGE :

- Dual plate check valve with ductile iron body and bronze aluminium disc between flanges PN10/16 Ref. 379 From DN50 to DN 350
- Between flanges Class 150 PN20 possible
- From DN50 to DN80, 4 holes on the body to be compatible Class 150 (PN20)

For the connection PN10/16 in DN50 with holes, use the 2 rings for a good centering

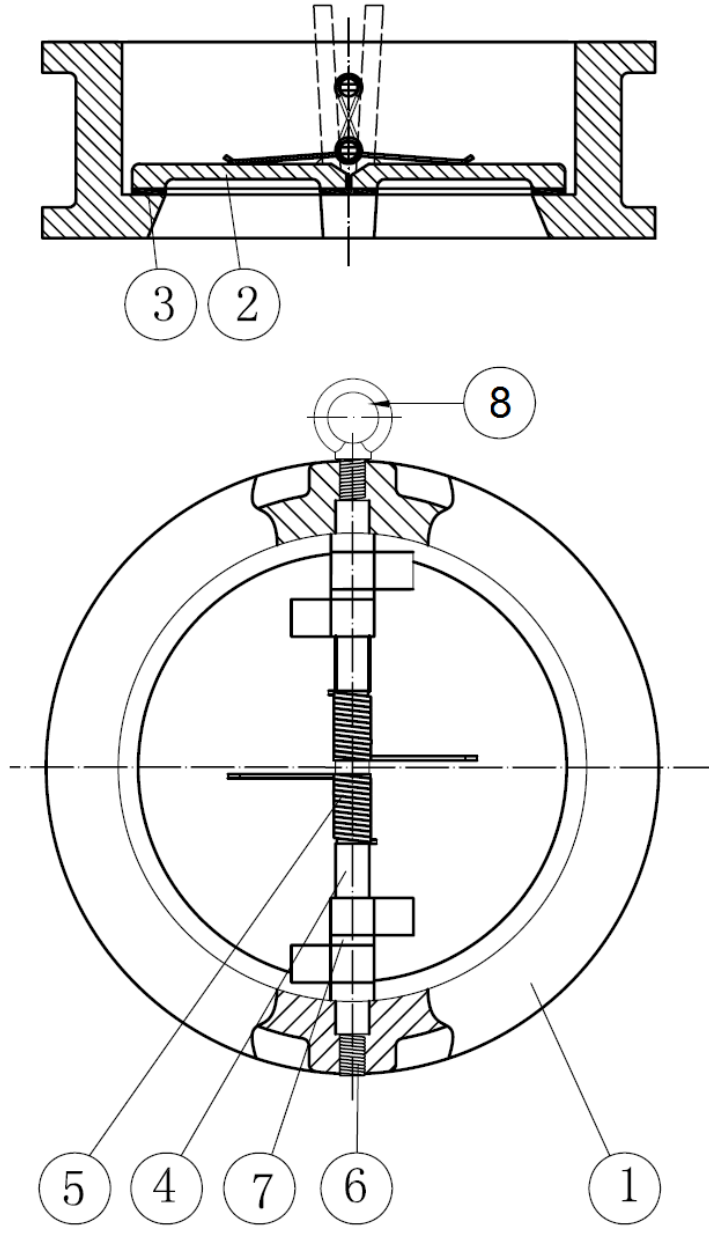
MATERIALS DN50-80 :



| Item | Designation | Materials |
|-------------------|------------------------|----------------------------|
| 1 | Body | Ductile iron EN-GJS-400-15 |
| 2 | Disc | Bronze-Alu ASTM B148 C954 |
| 3 | Seat | NBR |
| 4 | Shaft | AISI 316 |
| 5 | Spring | |
| 6 | Screw | Galvanized carbon steel |
| 7 | Spacer | PTFE |
| 8 (only for DN50) | Centering Ring PN10/16 | PPR |

DUCTILE IRON DUAL PLATE CHECK VALVE ALUMINIUM BRONZE DISC NBR SEAT

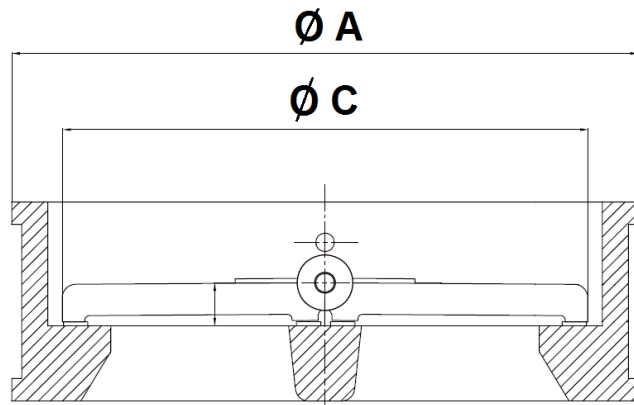
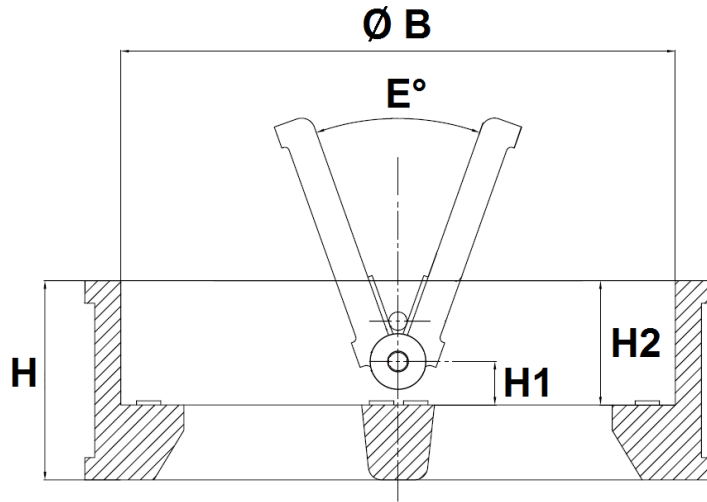
MATERIALS DN100 - 350 :



| Item | Designation | Materials |
|------|----------------------------------|----------------------------|
| 1 | Body | Ductile iron EN-GJS-400-15 |
| 2 | Disc | Bronze-Alu ASTM B148 C954 |
| 3 | Seat | NBR |
| 4 | Shaft | AISI 316 |
| 5 | Spring | |
| 6 | Screw | Galvanized carbon steel |
| 7 | Spacer | PTFE |
| 8 | Hoisting eye (from DN200 to 350) | AISI 304 |

DUCTILE IRON DUAL PLATE CHECK VALVE ALUMINIUM BRONZE DISC NBR SEAT

SIZE (in mm) :



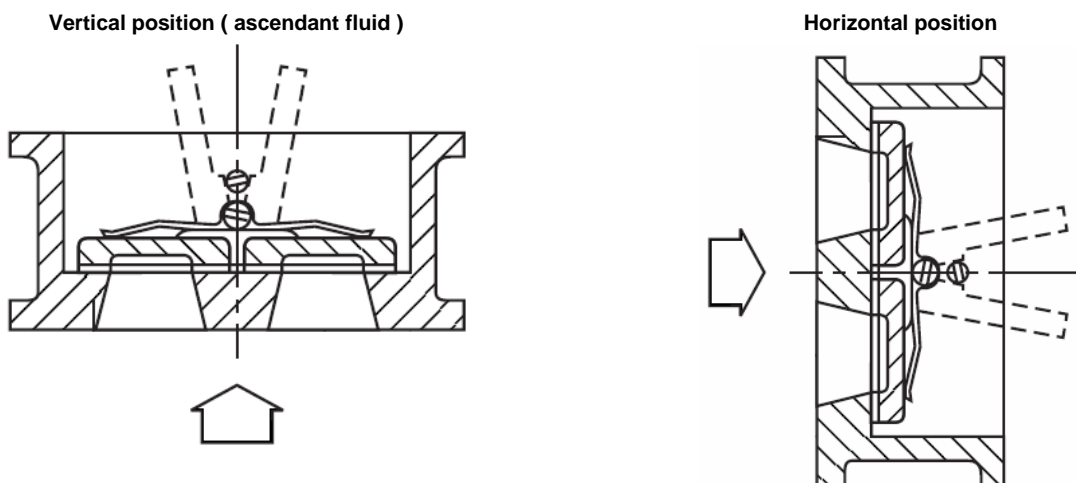
| DN | 50 | 65 | 80 | 100 | 125 | 150 | 200 | 250 | 300 | 350 |
|-------------|--------|--------|--------|--------|--------|--------|--------|--------|--------|--------|
| H | 54 | 54 | 57 | 64 | 70 | 76 | 95 | 108 | 143 | 184 |
| H1 | 14.4 | 16.9 | 19.9 | 21 | 22.3 | 22.5 | 28 | 34 | 37 | 35 |
| H2 | 43 | 43 | 45 | 47 | 51 | 54 | 69 | 71 | 100 | 120 |
| E° | 0° | 0° | 0° | 0° | 0° | 0° | 0° | 0° | 0° | 20° |
| Ø C | 60.5 | 75.8 | 80.5 | 104.5 | 130.3 | 155.9 | 201.2 | 257.2 | 303.3 | 345.9 |
| Ø B | 70.5 | 83.5 | 91.5 | 115.5 | 142.5 | 169.5 | 220.5 | 275.5 | 325.5 | 356 |
| Ø A | 109 | 129 | 144 | 164 | 194 | 220 | 275 | 330 | 380 | 440 |
| Weight (Kg) | 1.65 | 2.4 | 3.1 | 4.85 | 6.4 | 9.1 | 16.9 | 27.5 | 35.9 | 81 |
| Ref. | 379050 | 379065 | 379080 | 379100 | 379125 | 379150 | 379200 | 379250 | 379300 | 379350 |

DUCTILE IRON DUAL PLATE CHECK VALVE ALUMINIUM BRONZE DISC NBR SEAT

STANDARDS :

- Manufacturer certified ISO 9001 : 2015
- DIRECTIVE 2014/68/EU : For liquids and gas of Group 1
 - DN50 : Risk category I, CE marking
 - DN65-200 : Risk Category II, CE 0035 marking
 - DN250-300 : Risk Category III, CE 0035 marking
 - DN350 : Risk Category II, CE 0035 marking
- Certificate 3.1 on request
- Designing according to API 594
- Pressure tests according to API 598, table 6
- Length according to EN 558 Series 50
- Between flanges according to EN 1092-1 PN10/16
- Check valves according to LR Rules and Regulation for the classification of Ships, July 2019 (Type Approval Certificate) **Marine LLOYD'S REGISTER**. LR Type Approval System Test Specification Number 2, Chapter 8, Appendice 7-Valves :
 - BS EN 12266-1 : 2003
 - ISO 52008:2008
 - BS EN 1561
 - BS EN 1563
 - ASTM A431

INSTALLATION POSITIONS :



ADVICE : Our opinion and our advice are not guaranteed and SFERACO shall not be liable for the consequences of damages. The customer must check the right choice of the products with the real service conditions.