

# 500 HC VALVE WITH T15 ELECTRICAL ACTUATOR

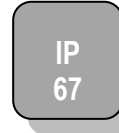
## FEATURES

The brass 2-way ball valve 500 HC+T15 provides the automatic shut-off function for thermally insulated piping for usual fluids: water, air, hydrocarbons. It is a full-bore valve. It is EC- and ACS-approved (French health compliance certificate). The ISO 5211 mounting pad enables the actuator to be directly assembled. The latter is suitable for S4-30-type light service factors installed indoors or outdoors under shelter. 2-wire wiring - Return via capacitor

## AVAILABLE MODELS

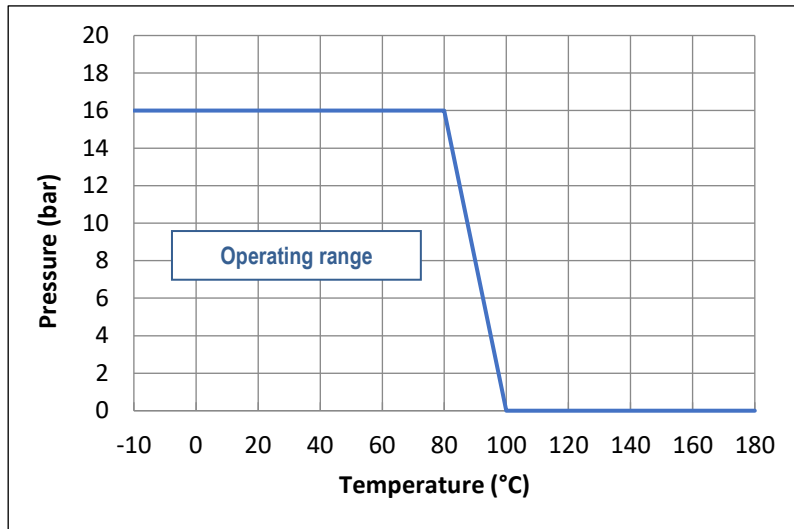
CW 617N brass body.  
1/2" to 2" diameters.  
G thread connections

**Supply voltages:** 12-24V AC-DC and 110-230 V AC.



## LIMITS OF USE

Fluid pressure: PS	16 bar
Fluid temperature: WT	- 10°C / + 100°C
Ambient temperature	- 15°C / + 50°C
Service factor	S4 – 30 %



## DIRECTIVES AND MANUFACTURING STANDARDS

OBJECT	Standard	ON
Pressure Equipment Directive 2014/68/EC	<b>1/4" to 1"</b> : not subject	
	<b>1" 1/4 to 2"</b> : category II	PASCAL 1115
Use for drinking water	A.C.S.	
Connection Motorisation	ISO 5211:	

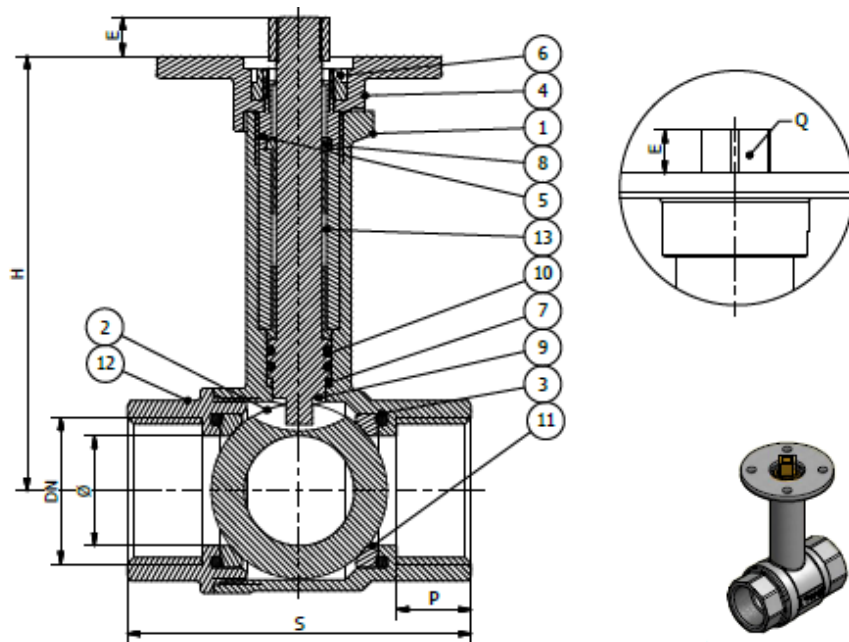
Information given as an indication only, and subject to possible modifications



# 500 HC VALVE WITH T15 ELECTRICAL ACTUATOR

## CONSTRUCTION

No.	Item name	Material	No.	Name	Material
1	Body	Nickel-plated CW 617N brass	7	Anti-friction ring	PTFE
2	Ball	Chromium-plated CW 614 brass	8	Anti-friction coupling	PTFE
3	O-ring	NBR	9	Stem	CW 614N brass
4	Motorisation flange	Nickel-plated CW 617N brass	10	O-ring	FPM
5	Nut	CW 614N brass	11	Seat	PTFE
6	Nut	CW 614N brass	12	End	Nickel-plated CW 617N brass
			13	Guiding ring	CW 614N brass



## DIMENSIONS (mm)

DN	1/2"	3/4"	1"	1"1/4	1"1/2	2"
Ø	15	20	25	32	39	48
S	56	68	78	90	100	115
P	14	16	17	18	19	21
H	89	92	98	108	114	131
E	8	8	8	10	10	10
Q	11	11	11	11	11	11
ISO	F05	F05	F05	F05	F05	F05

Information given as an indication only, and subject to possible modifications



# 500 HC VALVE WITH T15 ELECTRICAL ACTUATOR

## T15 ELECTRIC MOTORISATION

The TCR motorisation proposed as standard comprises:

- IP67 plastic housing for actuator and steel gear box,
- a safety coefficient of 1.3 minimum compared to the nominal torque of the valve,
- an upstream / downstream pressure difference  $\Delta P=10$  bar max.

The actuator's assembly is direct.

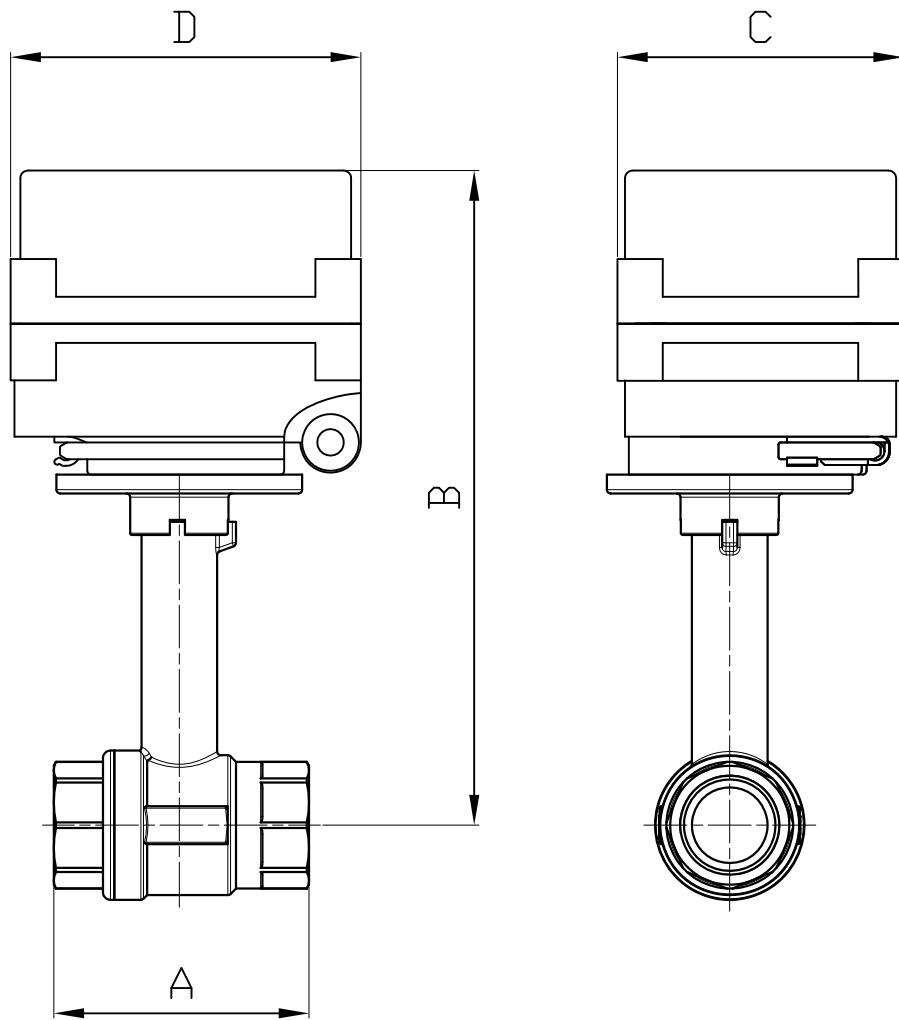
DN	Actuator	Power 110-230V AC	Power 12V DC-24V AC-DC	Time	Standard equipment of the actuator
1/2"	T15	30	20	12s	2-wire wiring - capacitor return NF version perpendicular to the direction of the fluid 2 adjustable limit switches 2 dry auxiliary contacts Thermal protection of the motor Stand-by manual control with key Position visual indicator Electrical connection: 1 x PE M12 + 1.5m cable
3/4"	T15	30	20	12s	
1"	T15	30	20	12s	
1" 1/4	T15	30	20	12s	
1" 1/2	T15	30	20	12s	
2"	T15	30	20	12s	

For any other operating conditions, please contact us.

\* indicative time for actuator running empty

Information given as an indication only, and subject to possible modifications





DN	1/2"	3/4"	1"	1 1/4"	1 1/2"	2"
SERVO	T15	T15	T15	T15	T15	T15
A	56	68	78	90	100	115
B	169.4	172.4	178.4	188.4	194.4	211.4
C	75.7	75.7	75.7	75.7	75.7	75.7
D	92.6	92.6	92.6	92.6	92.6	92.6
KG	0.99	1.12	1.4	1.76	2.01	2.78

# T15 ELECTRICAL ACTUATOR

## FEATURES

The ultra-compact T15 electric actuator is intended for motorising under on/off operation the ¼ turn valves with a torque of at most 10 Nm. It is supplied via 2 wires and return to position using a capacitor. With a compact construction and plastic housing, it is especially well suited for motorising small diameter ball valves. **IP67 leak-tightness** : for indoor use and possibly outdoors under shelter.

## AVAILABLE MODELS

**Supply voltages** : 230V AC and 12-24V AC-DC

## LIMITS OF USE

IP Code	IP 67
Ambient temperature	-15°C / +50°C
Service factor	S4 – 30%



## MECHANICAL FEATURES

Gear box	treated steel pinions
Torque	15 Nm
Angle of rotation	90° +/- 2°
Manoeuvring time	12 s
ISO 5211:	F03 / F05 – star 11
Declutching	Without
Override control	Using a hex key
Weight	1.000 kg



## ELECTRICAL FEATURES

Power	230 V AC: 30 W	24 V AC: 20 W
Overheating	Thermal protection	
Limit switches	2 adjustable switches	
Auxiliary switches	2 dry contacts	
Anti-condensation	Without	
Electrical connection	PE M12 + 1.5 m cable	

Information given as an indication only, and subject to possible modifications

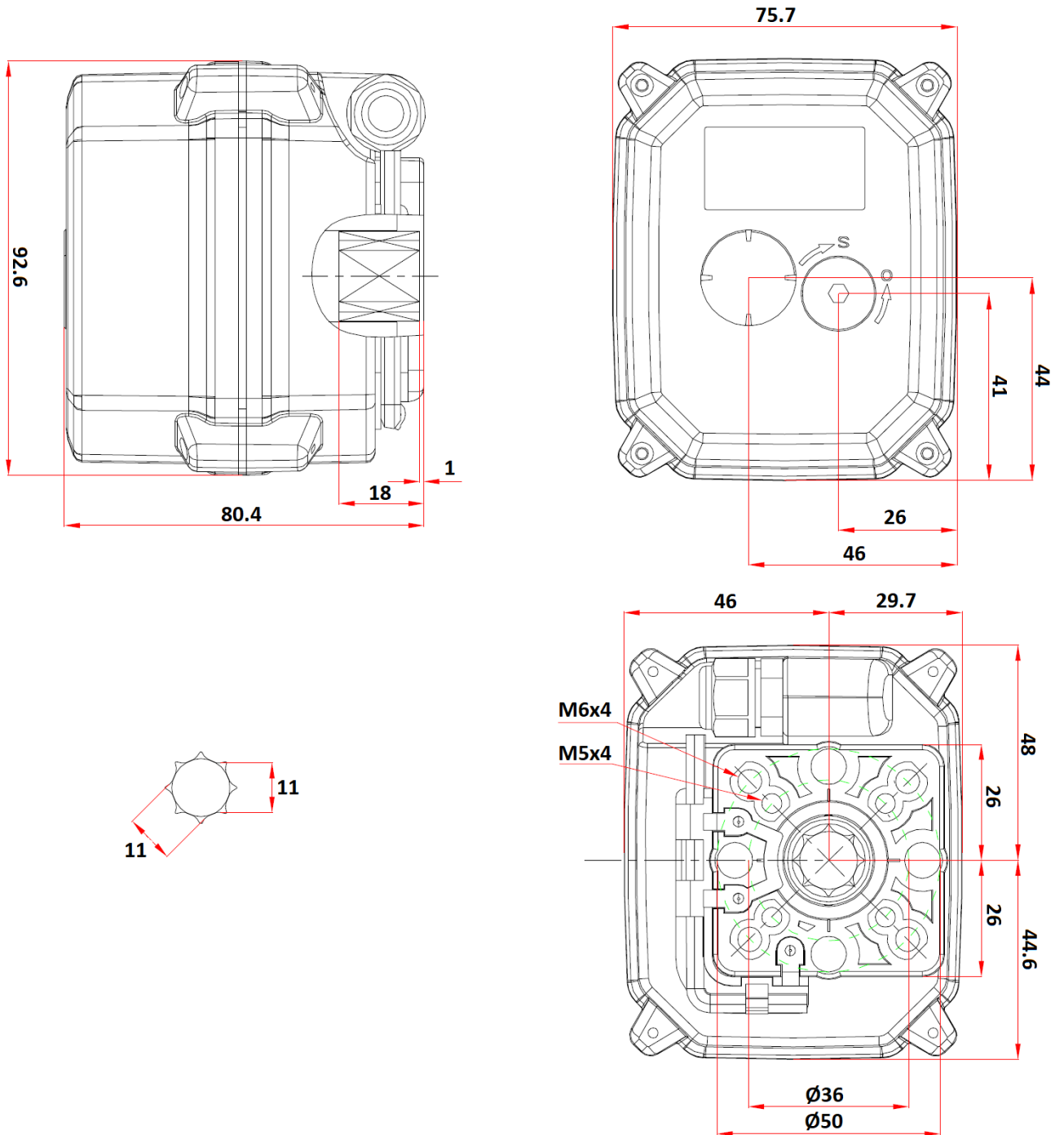


# T15 ELECTRICAL ACTUATOR

## CONSTRUCTION

Housing	PA Plastic	Limit switch A	Steel
Gear box	Treated steel	Limit switch B	Steel
ISO mounting pad	Steel	Condenser	
Limit cams	Steel	Position indicator	

## DIMENSIONS (mm)

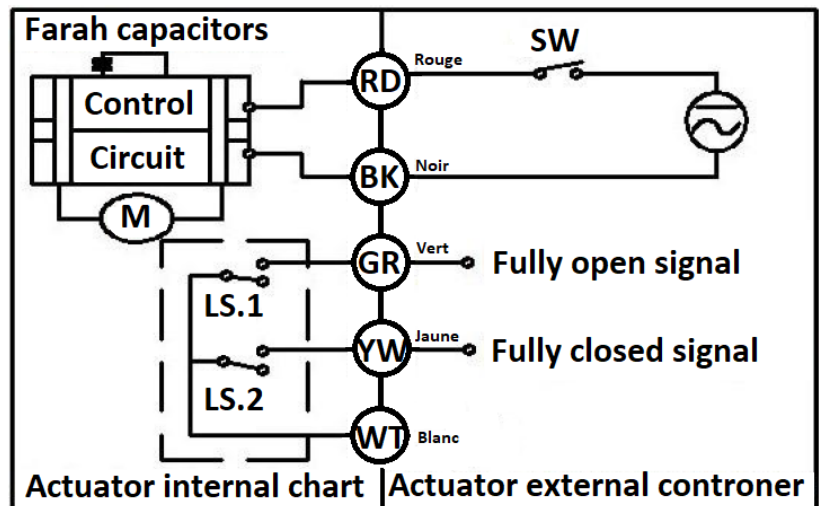


Information given as an indication only, and subject to possible modifications

# T15 ELECTRICAL ACTUATOR

## WIRING DIAGRAM

	Wire	Wiring
RD	red	Phase
BK	black	Common
GR	Green	Auxiliary switch "O"
YW	yellow	Auxiliary switch "F"
WT	White	Common contact



## SWITCH SETTING

The cams are attached to the drive stem

2. Clockwise rotation = valve closing. The micro-switch stops the actuator.
3. Anti-clockwise rotation = valve opening. The micro-switch stops the actuator.

Information given as an indication only, and subject to possible modifications