

513-514 VALVES WITH AP-RE PNEUMATIC ACTUATOR

FEATURES

The brass 3-way 513+AP-RE (L-shaped) and 514 XS+AP-RE (T-shaped) steel ball valves provide the mixing, distribution or automatic discharge functions for pipes with non-loaded industrial fluids. It is a reduced bore valve. It is EC- and ACS-approved (French health compliance certificate) to be used for drinking water. The ISO 5211 mounting pad allows the actuator to be directly assembled. The pneumatic motorisation is available in double and spring-return with numerous options.

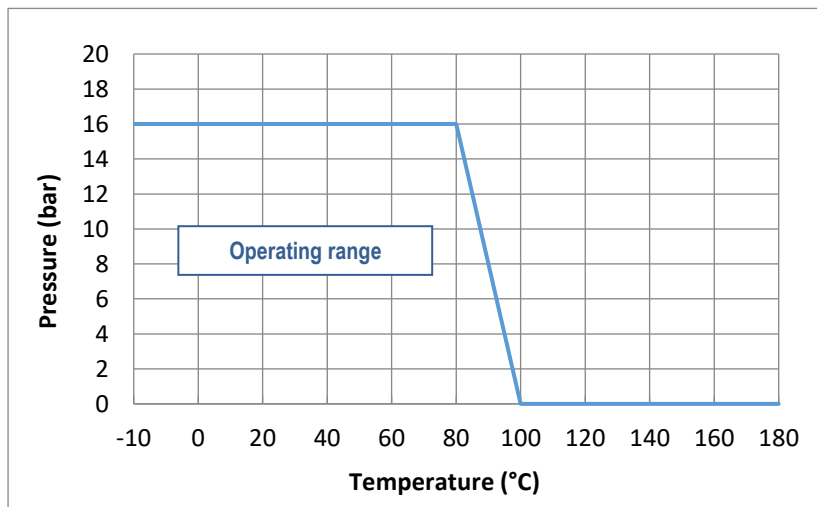
AVAILABLE MODELS

Brass body - reduced bore.
1/4" to 2" diameters.
G thread connections.



LIMITS OF USE

Fluid pressure: PS	16 bar
Fluid temperature: WT	- 10°C / +100°C
Ambient temperature	- 10°C / + 80°C
Motor compressed air	mini 6 bar / maxi 10 bar



1/2" à 4"



DIRECTIVES AND MANUFACTURING STANDARDS

OBJECT	Standard	ON	OBJECT	Standard
Pressure Equipment Directive 2014/68/EC	1/4" to 1": not subject		Connection Motorisation	ISO 5211
	1" 1/4 to 2": category II	PASCAL 1115	Actuator pilot connection	NAMUR
Operates on drinking water	ACS	CARSO	Switch box connection	VDI/VDE 3845

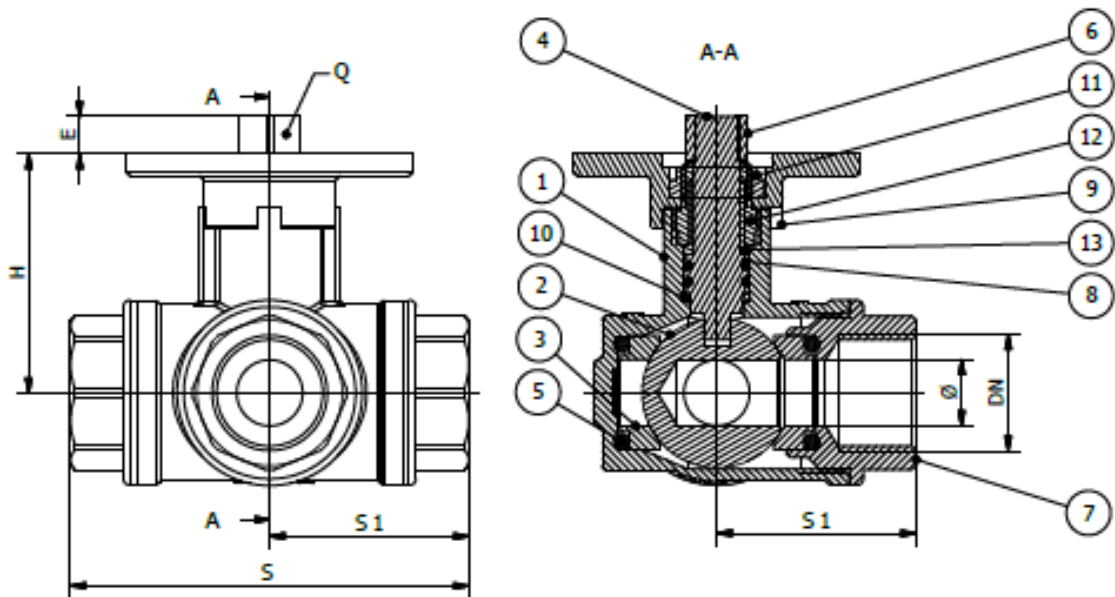
Information given as an indication only, and subject to possible modifications



513-514 VALVES WITH AP-RE PNEUMATIC ACTUATOR

CONSTRUCTION

No.	Name	Material	No.	Name	Material
1	Body	CW 617N brass	8	O-ring	FPM
2	Ball	CW 614N brass	9	ISO 5211 mounting pad	CW 617N brass
3	Seat	PTFE	10	Anti-friction washer	PTFE
4	Stem	CW 614N brass	11	Nut	CW 614N brass
5	O-ring	FPM	12	Nut	CW 614N brass
6	Square shank	CW 614N brass	13	Anti-friction bearing	PTFE
7	End	CW 617N brass			



DIMENSIONS (mm)

DN	1/4"	3/8"	1/2"	3/4"	1"	1"1/4	1"1/2	2"
S	76	78	82	90	106	120	142	165
S1	38	39	41	45	53	60	71	82.5
Ø	10	10	10	15	20	25	32	40
P	18	18	17	18.5	20	23.5	28.5	32
H	50.5	50.5	50.5	53.5	63	67	73	80
E	8	8	8	10	10	12	12	12
Q	11	11	11	11	11	14	14	14
ISO	F05	F05	F05	F05	F05	F05	F05/F07	F05/F07

Information given as an indication only, and subject to possible modifications



513-514 VALVES WITH AP-RE PNEUMATIC ACTUATOR

AP-RE PNEUMATIC MOTORISATION

The ALPHAIR motorisation proposed as standard comprises:

- a safety coefficient of 1.3 minimum compared to the nominal torque of the valve,
- 6 bar air non-lubricated dry motor
- an upstream / downstream pressure difference $\Delta P=10$ bar max.

The actuator assembly is direct.

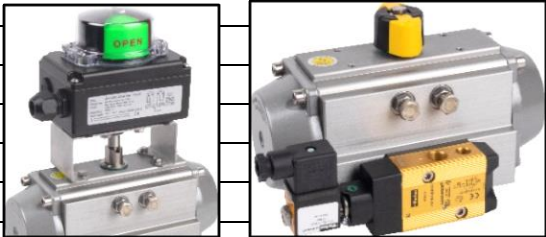
DN	Double-effect	V (litres)	Time (s)*	Single-effect	V (litres)	Time (s)*
1/4"	RE 43	0.18	1	RES 51/6	0.23	1
3/8"	RE 43	0.18	1	RES 51/6	0.23	1
1/2"	RE 43	0.18	1	RES 51/6	0.23	1
3/4"	RE 51	0.23	1	RES 64/6	0.45	1
1"	RE 51	0.23	1	RES 76/6	0.61	1
1"1/4	RE 64	0.45	1	RES 86/6	0.98	1
1"1/2	RE 64	0.45	1	RES 101/6	1.80	2
2"	RE 76	0.61	1	RES 101/6	1.80	2

For any other operating conditions, please contact us.

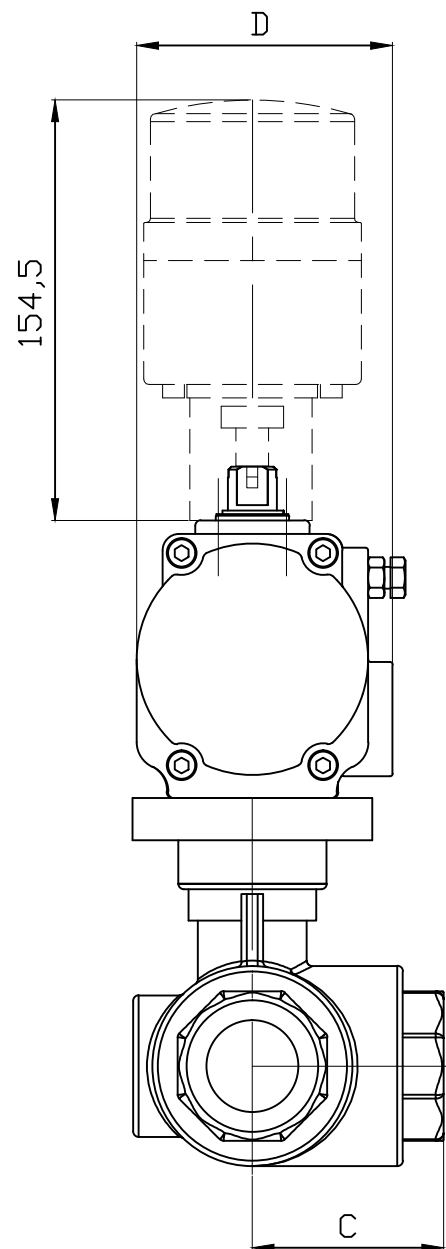
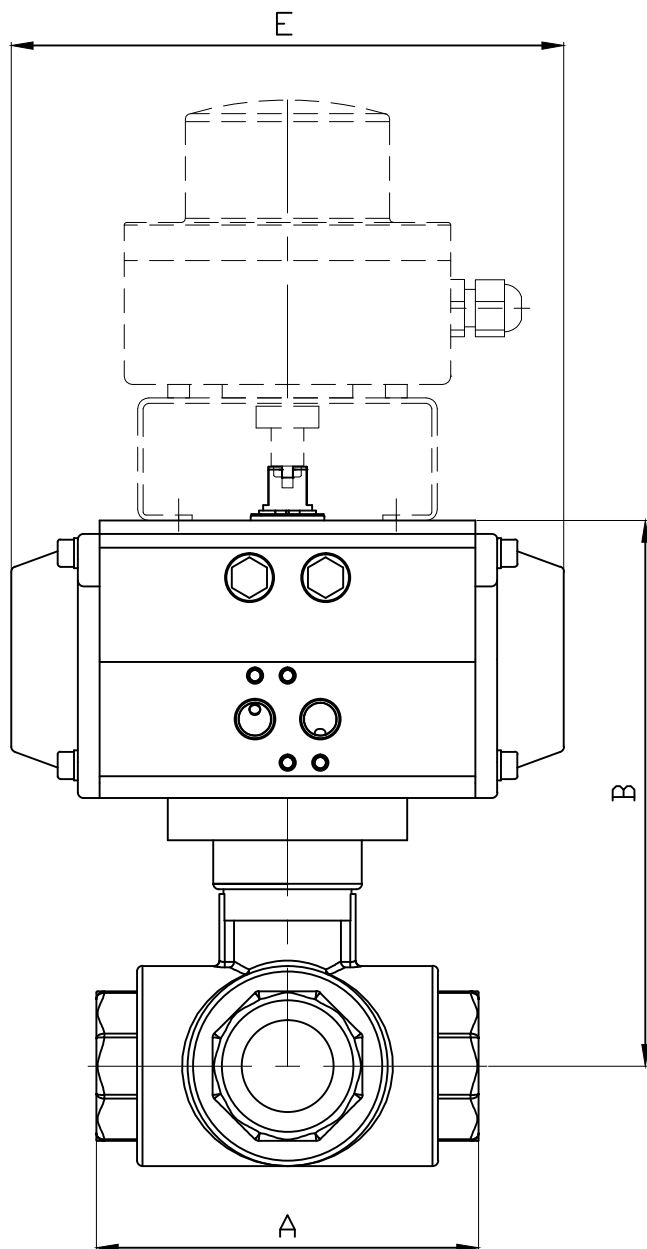
* indicative time for actuator running empty

MOTORISATION OPTIONS

There are many options, so please contact our sales service for more information on these:

1	actuators dimensioned for a compressed air pressure of 3, 4 or 5 bar	
2	actuator dimensioned for an upstream / downstream pressure difference ΔP greater than 10 bar	
3	actuator with special coating, stainless steel actuator	
7	100mm high steel height adjustment for installing heat-insulation	
10	compressed air filter regulator	
11	all types of piloting solenoid valves	
12	all types of switch boxes	
13	all types of positioner	
14	quick exhaust	
15	flow-rate limiters	
16	air lock	

Information given as an indication only, and subject to possible modifications



DN	1/4"		3/8"		1/2"		3/4"		1"		1 1/4"		1 1/2"		2"	
ALPHAIR	RE43	RES51	RE43	RES51	RE43	RES51	RE51	RES64	RE51	RES76	RE64	RES76	RE64	RES76	RE64	RES76
A	76		78		82		90		106		120		142		165	
B	112.5	125.5	112.5	125.5	112.5	125.5	128.5	139.5	132	165	153	169	156	175	166	182
C	38		39		41		45		53		60		71		82.5	
D	62	75	62	75	62	75	75	86	75	94	86	94	86	94	86	94
E	141	138	141	138	141	138	138	155	138	203	155	203	155	203	156	203
KG	1.69	2.07	1.67	2.05	1.68	2.1	2.2	2.9	2.7	4.84	3.8	5.4	5.4	7.1	7.3	8.92